

# Rotterdam 10M

## MP Build(A02)

2009.04.09

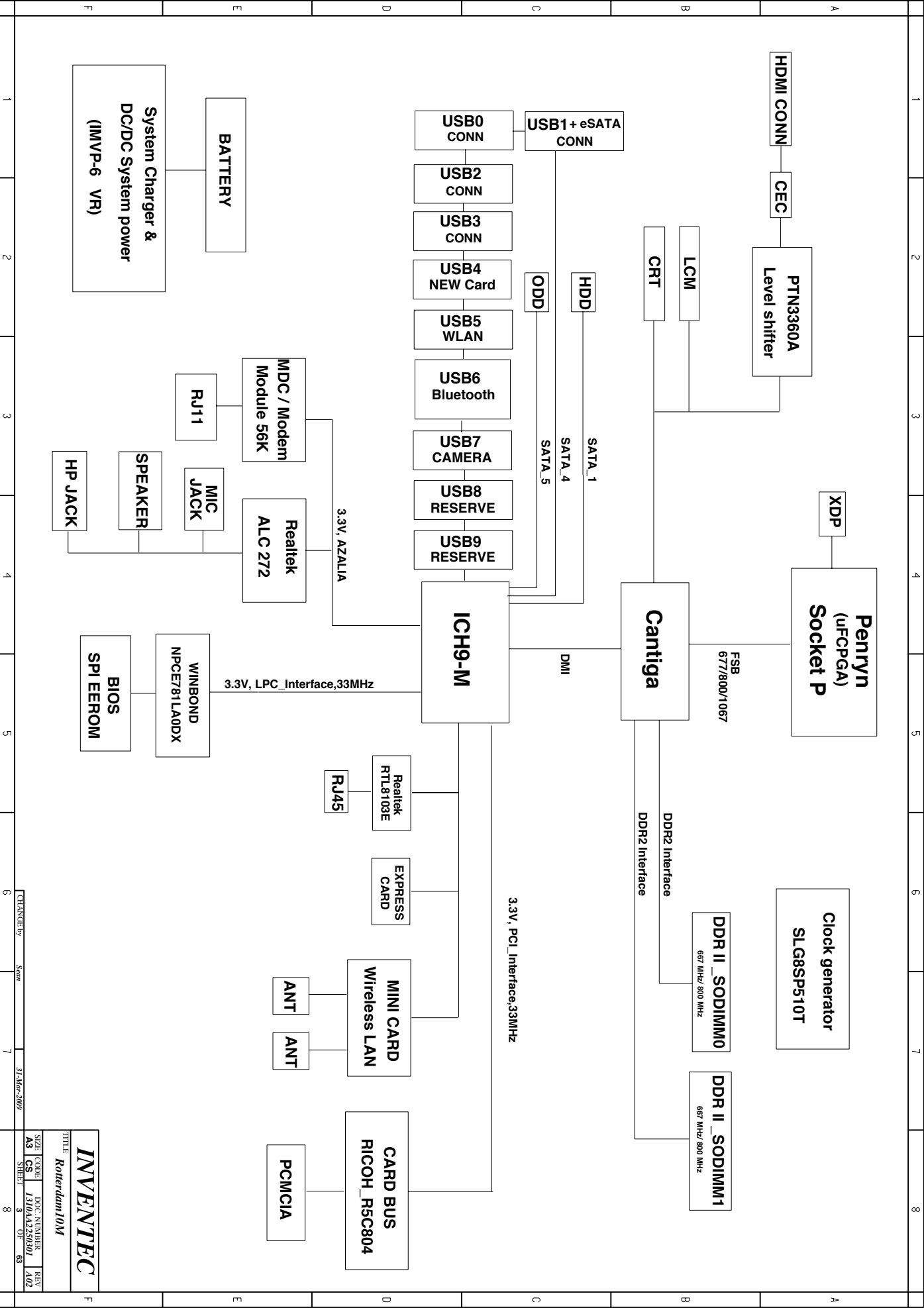
	1	2	3	4	5	6	7	8	
A									A
B									B
C									C
D									D
E									E
F									F

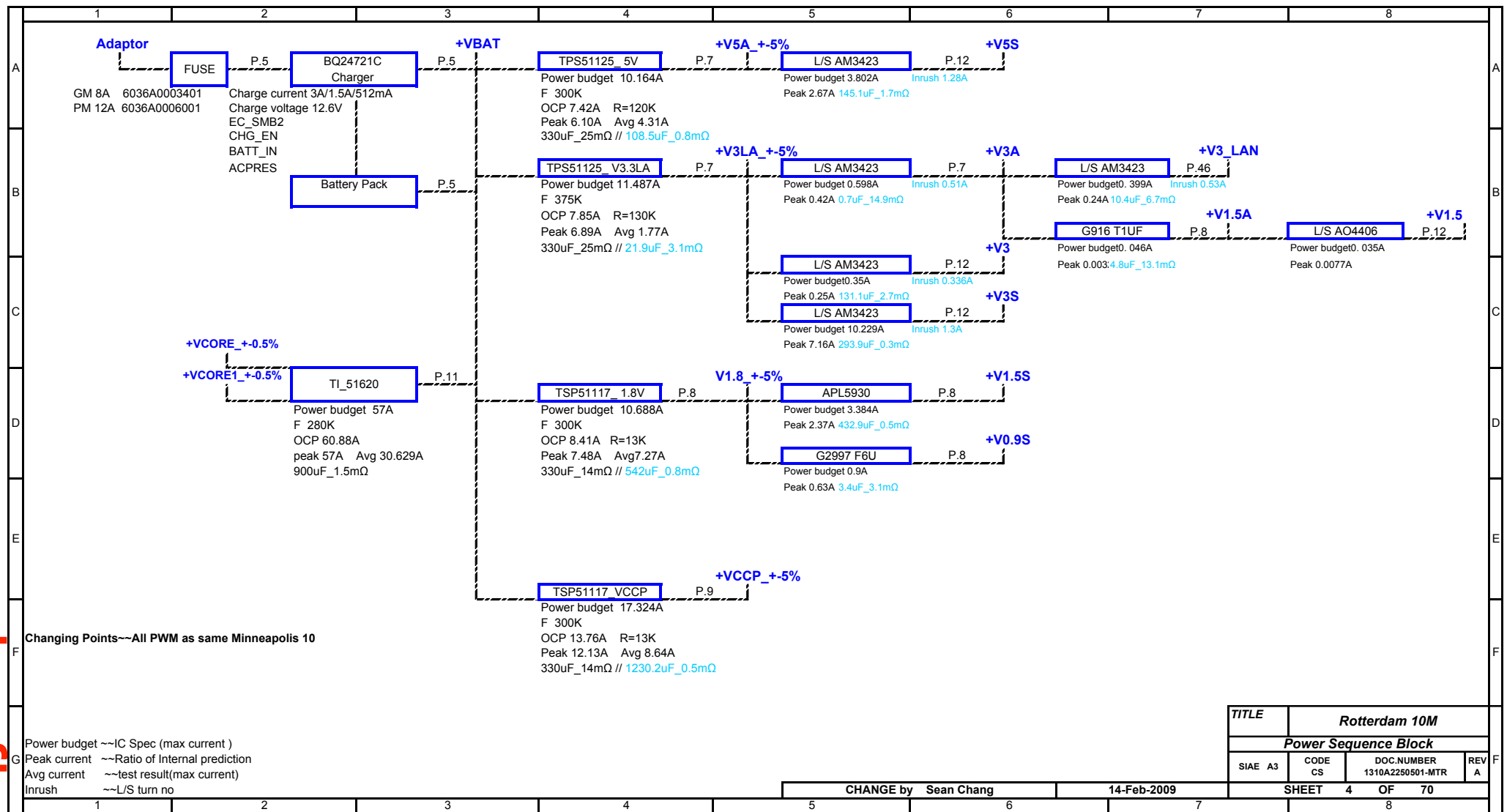
DATE	1	CHANGE NO.	2	3	4	5	6	7	8

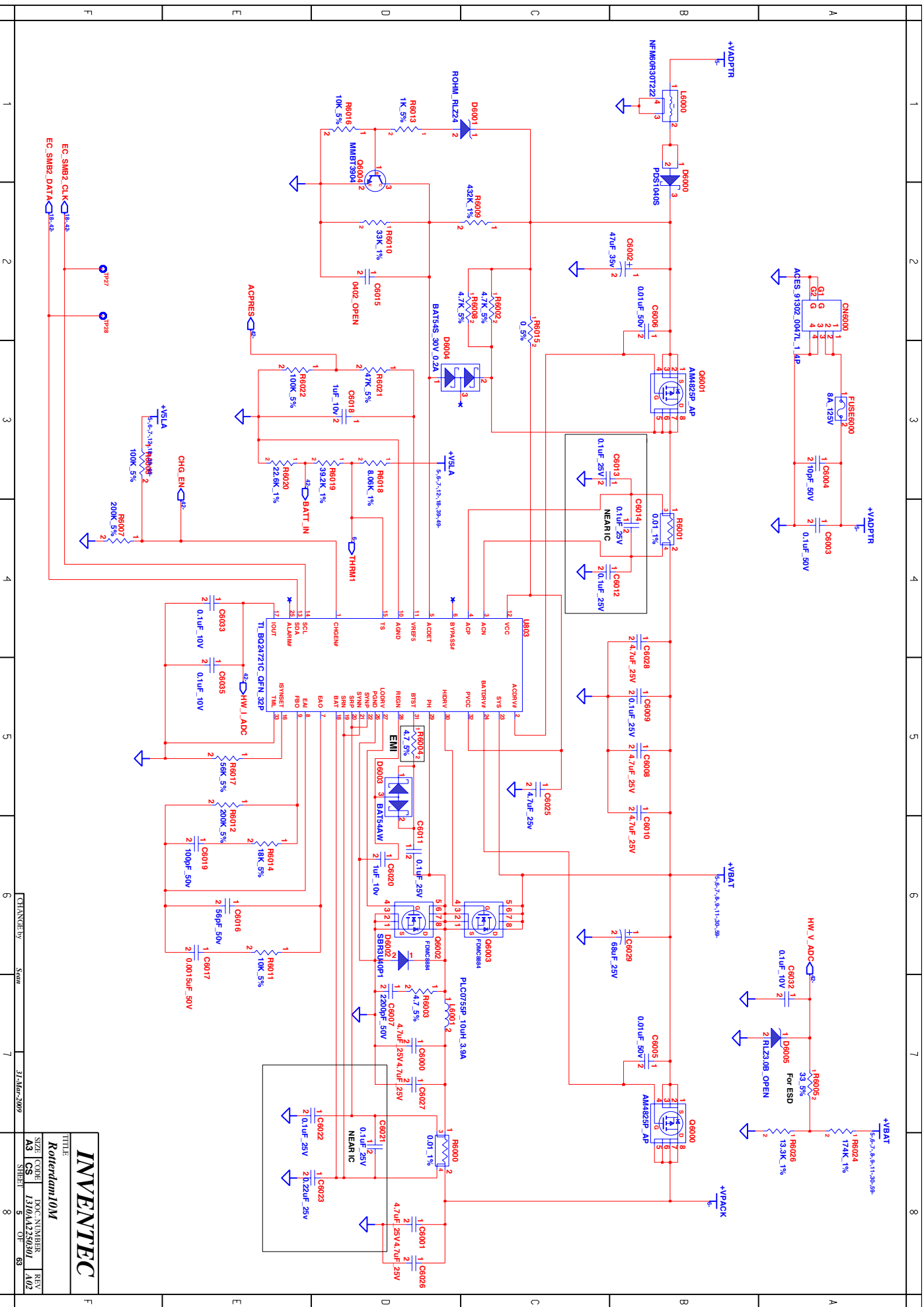
DRAWER	EE	DATE	POWER	DATE	
DESIGN					
CHECK					
RESPONSIBLE					
SIZE =	3	VER.			
FILE NAME	XXXX XXXXXX.XX				
FIN	XXXXXXXXXXXX				

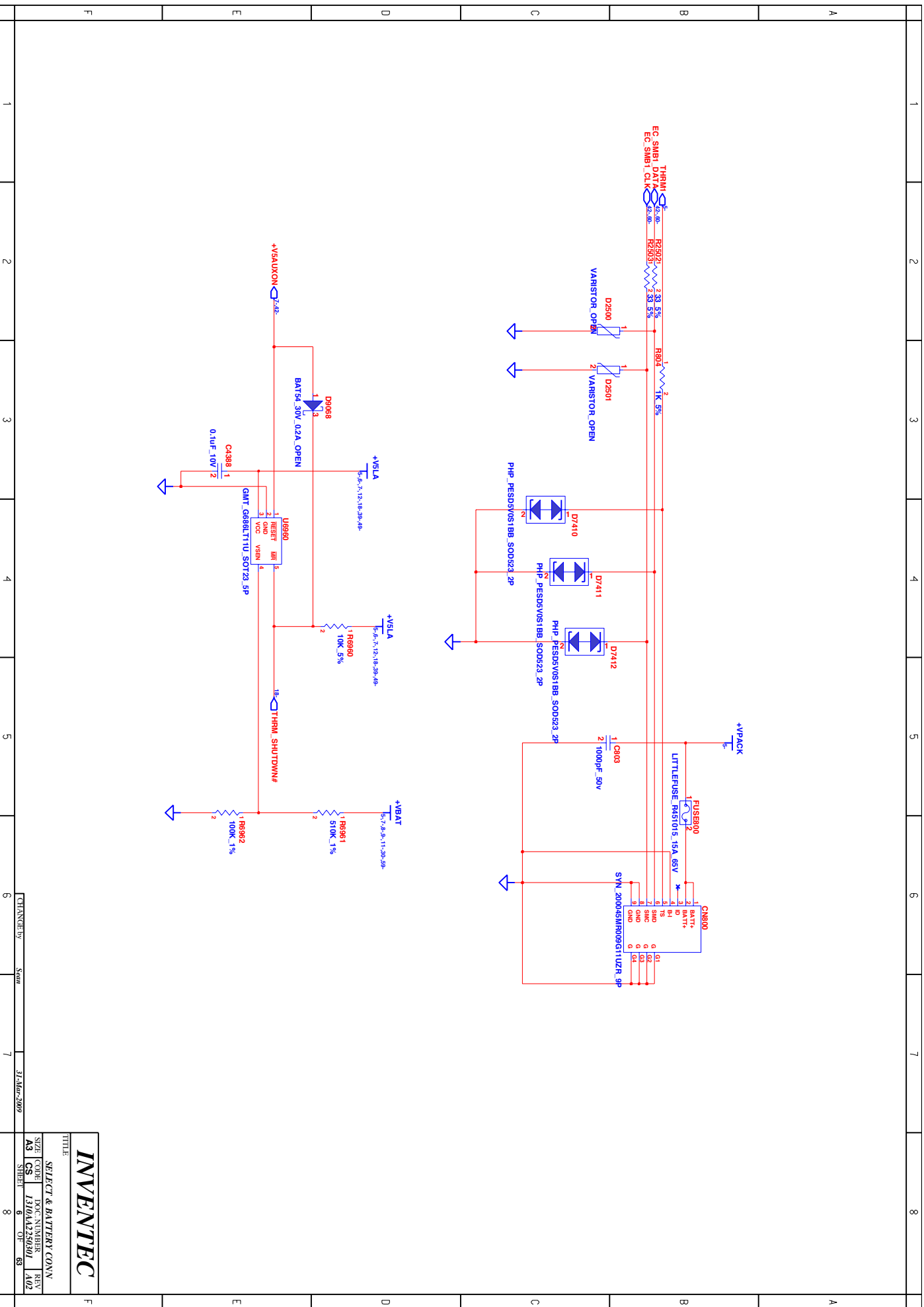
INVENTEC	
Rotterdam 10M	
SIZE	CODE
A3	CS
SHEET 1 OF 63	
DOC NUMBER	REV
1310M425001	A02







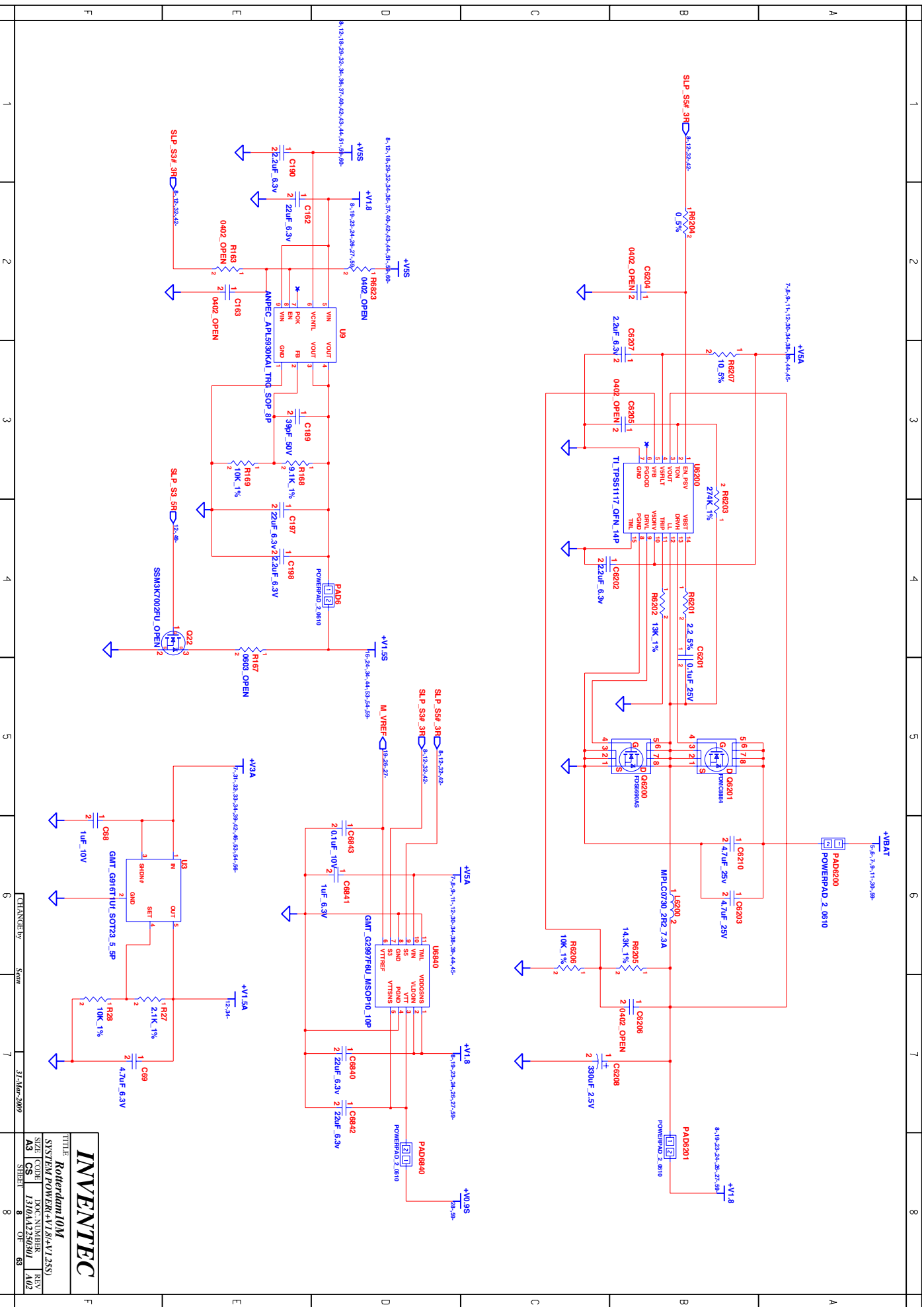




**INVENTEC**

SELECT & BATTERY CONV  
SIZE CODE  
A3 CS 1310AA235000  
REV 402  
SHEET 6 OF 63

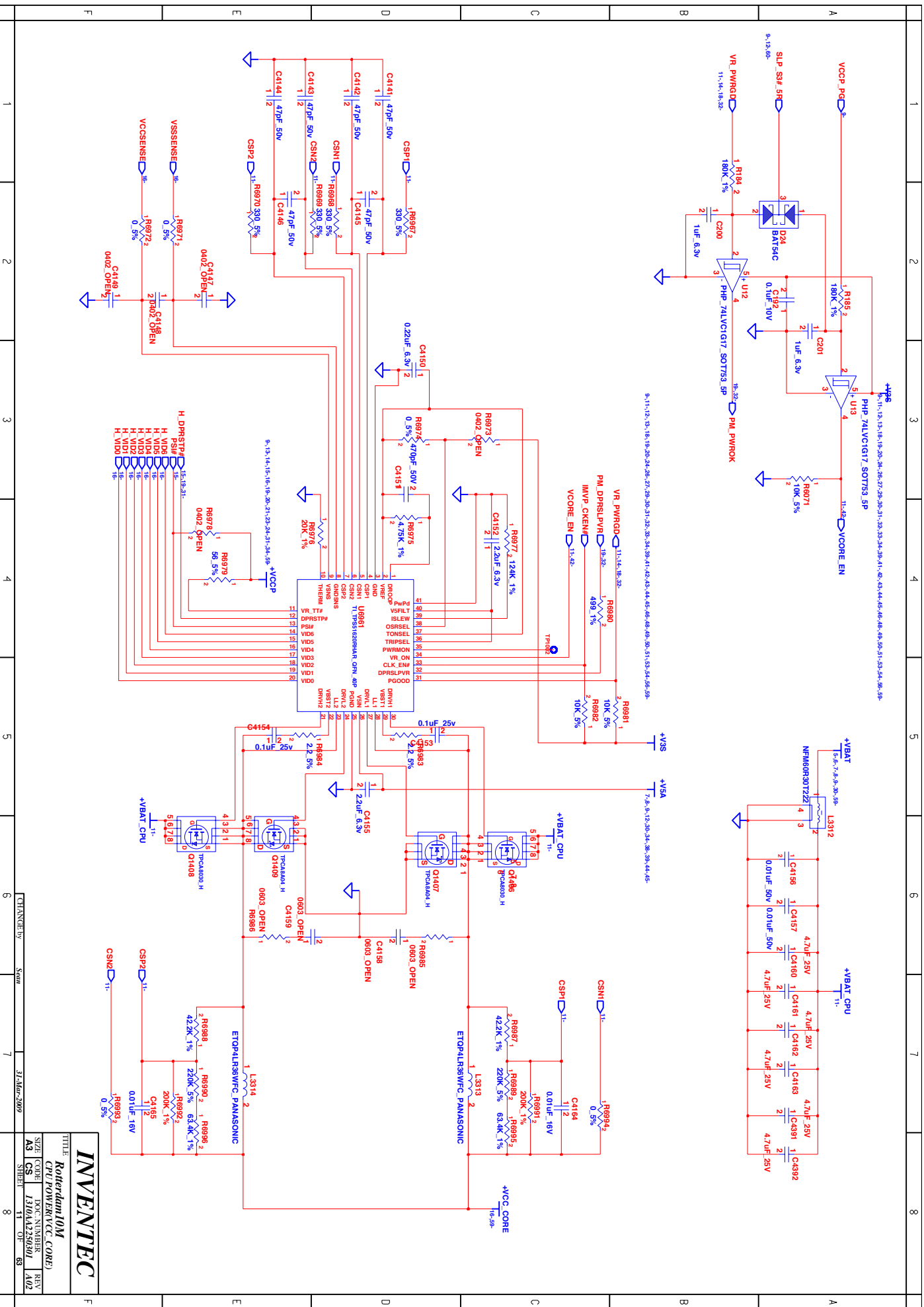






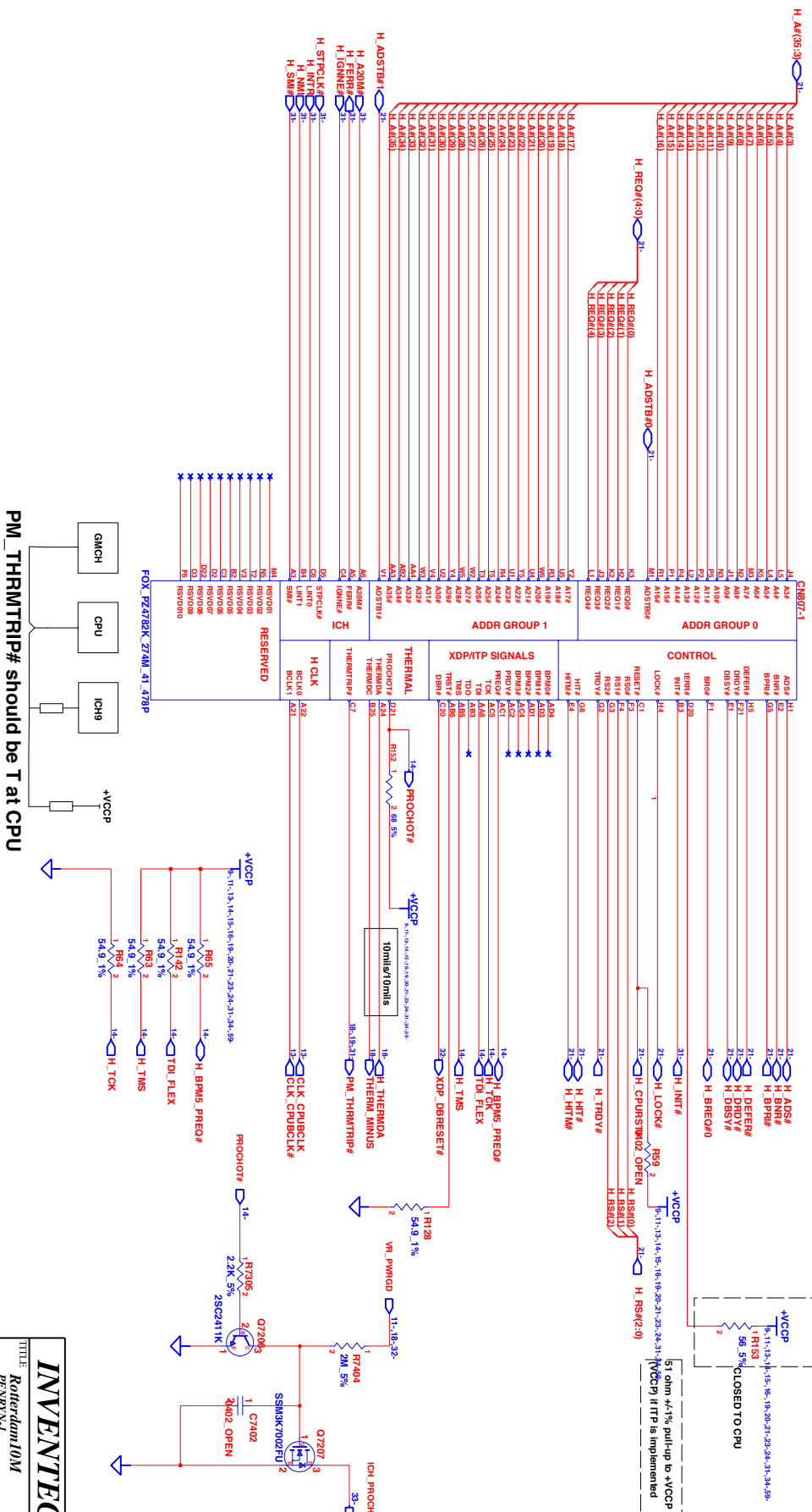


	1	2	3	4	5	6	7	8		
A	<div>BLANK</div>								A	
B									B	
C									C	
D									D	
E									E	
F	1	2	3	4	5	6	7	8	F	
						CHANGED by		Swan	31-Mar-2009	







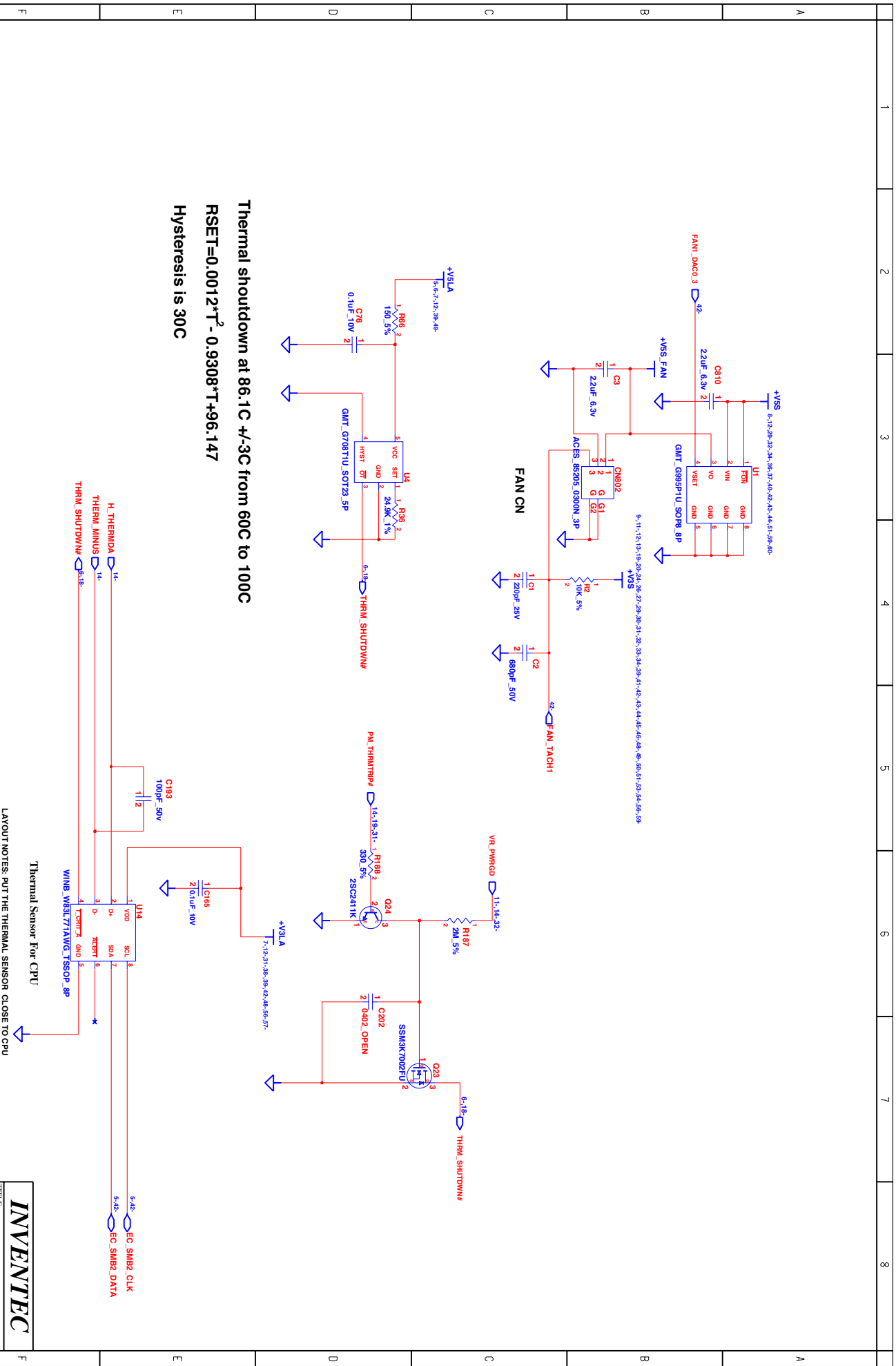






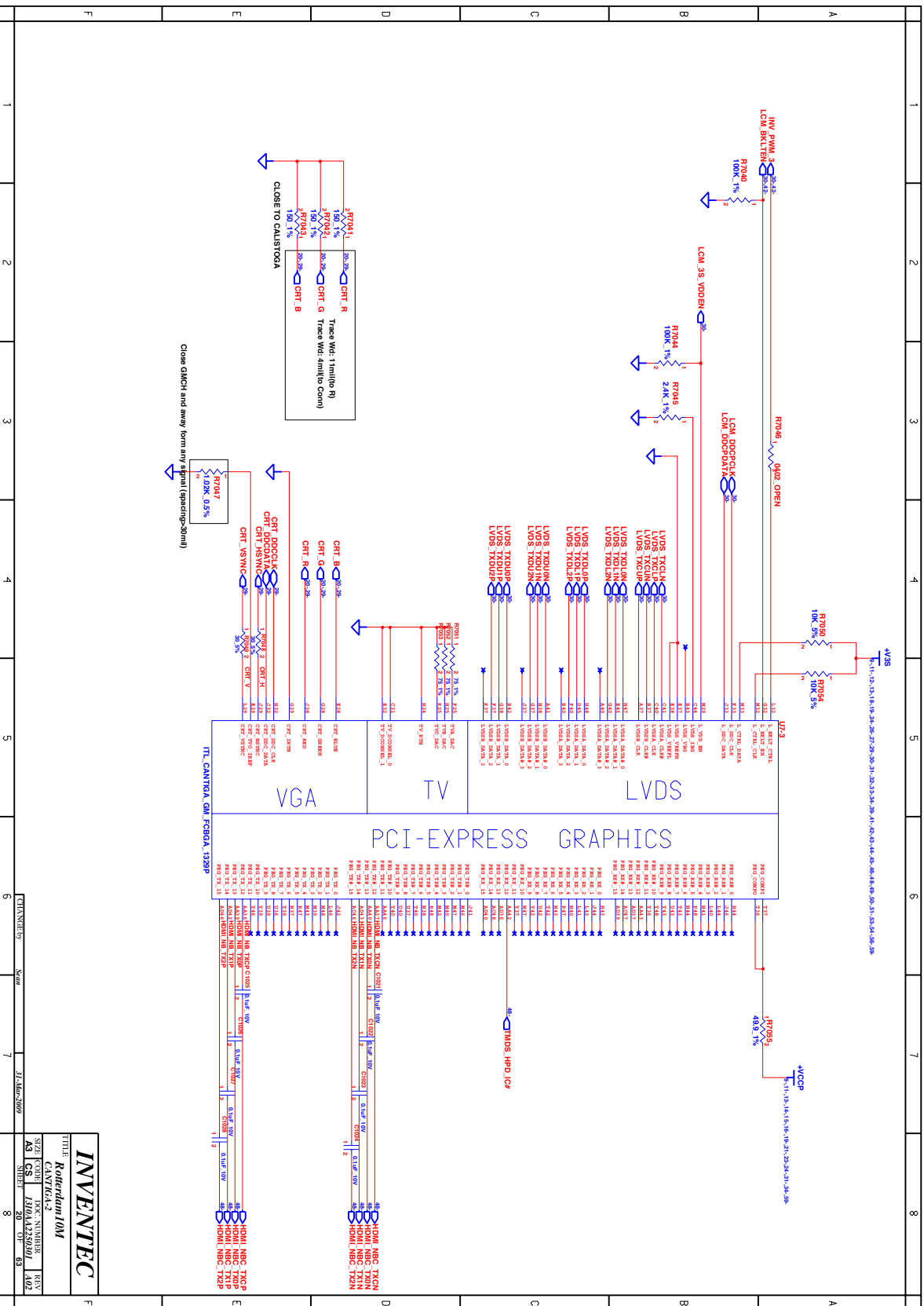






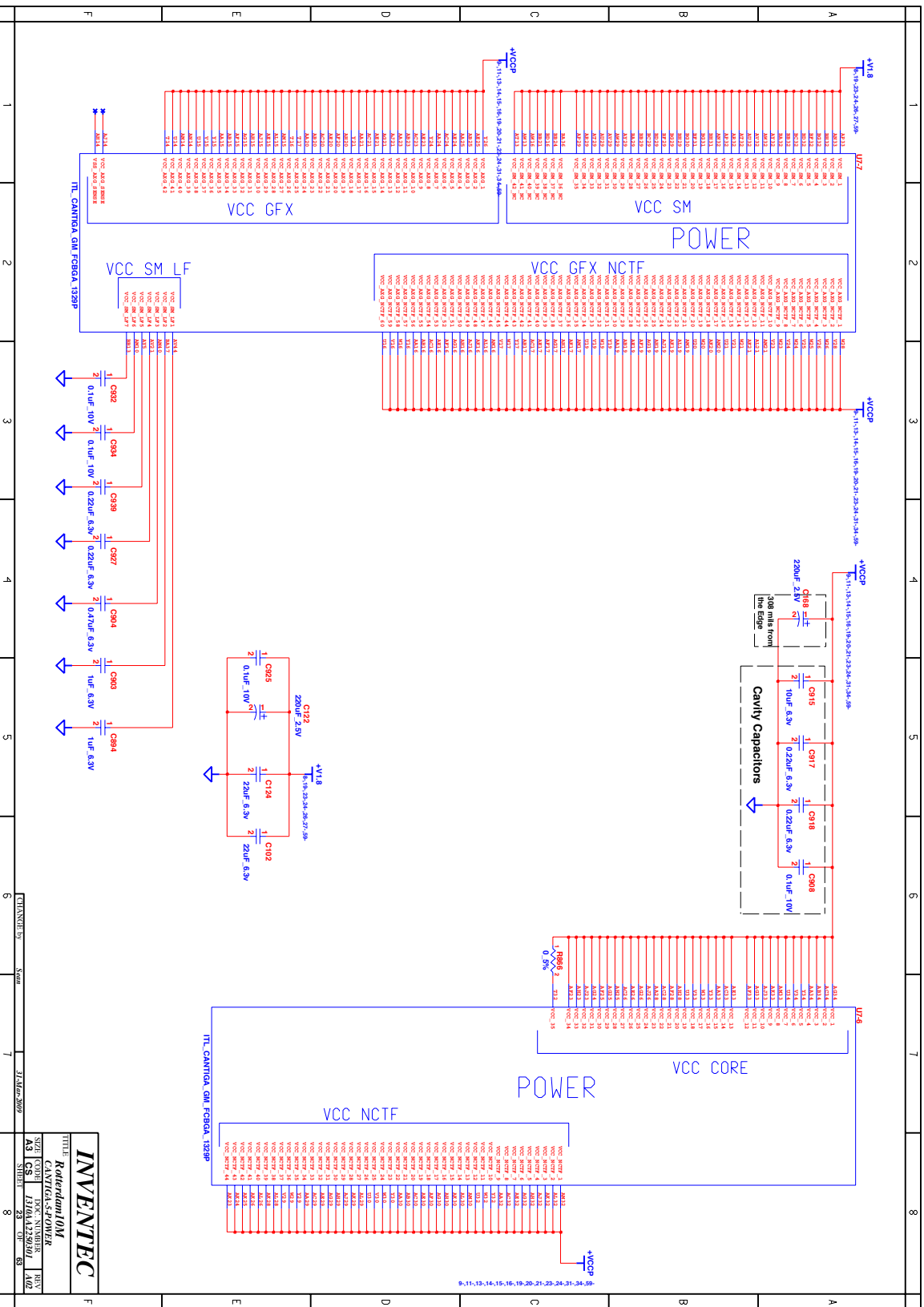
1	2	3	4	5	6	7	8
1	2	3	4	5	6	7	8

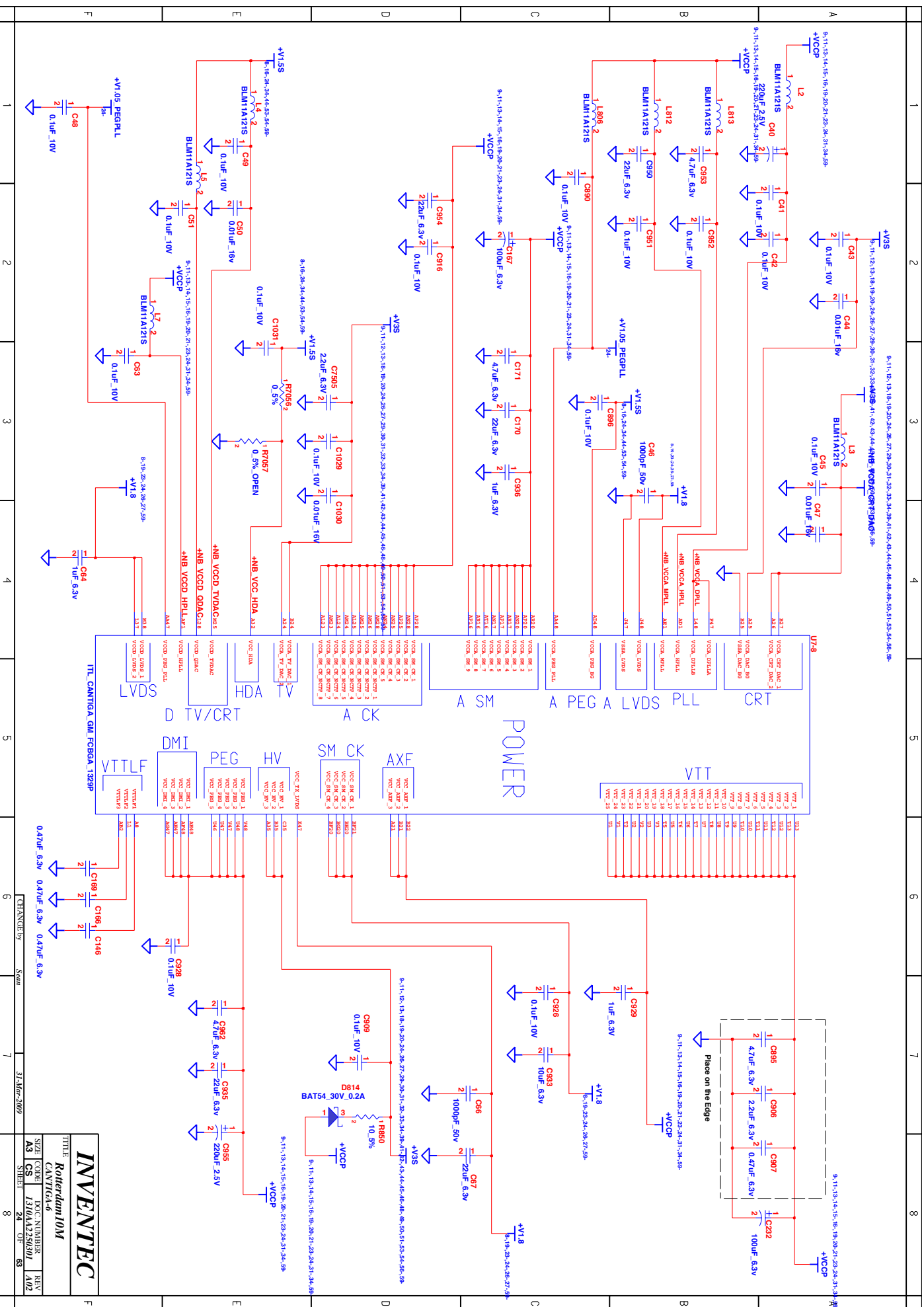














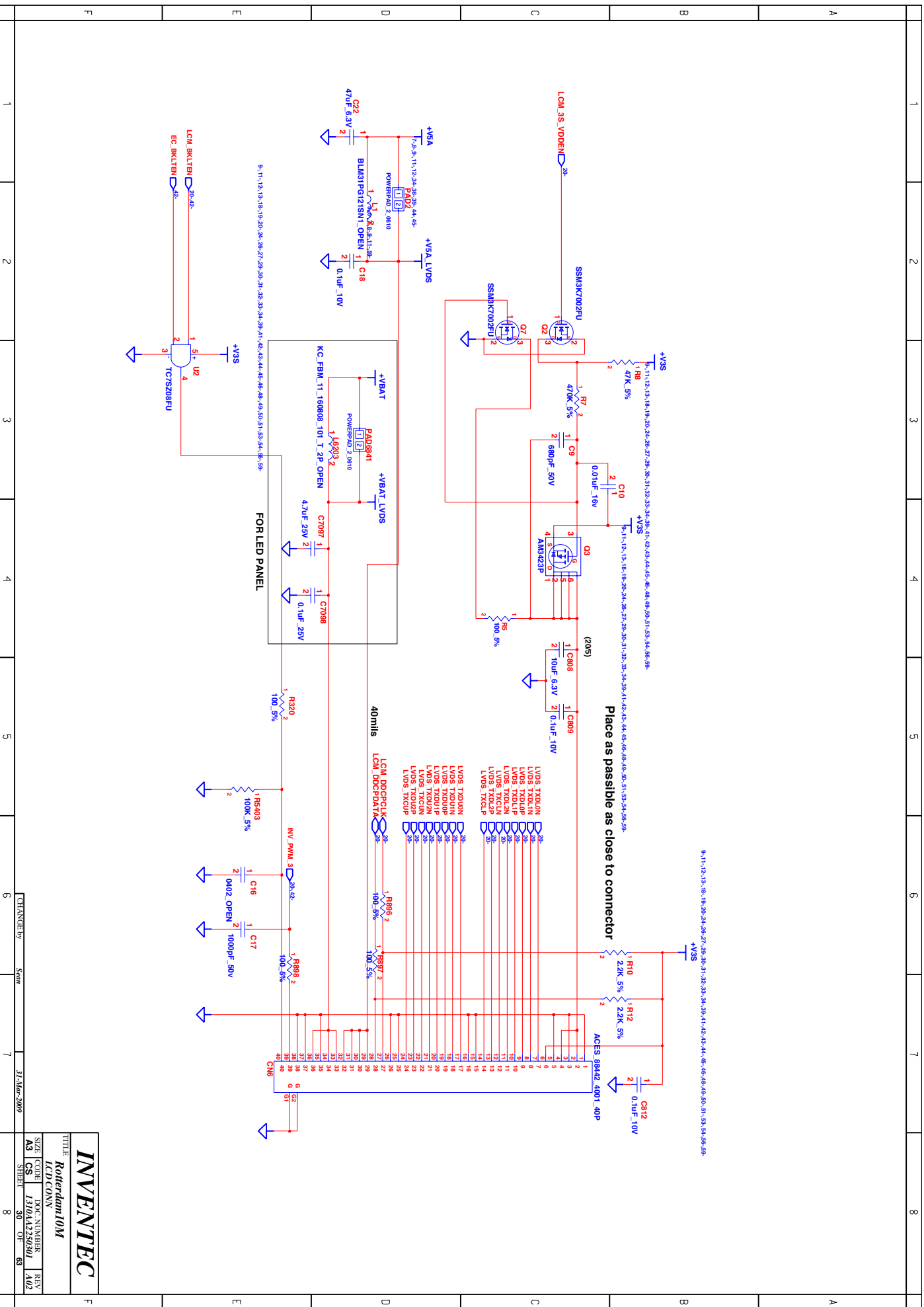


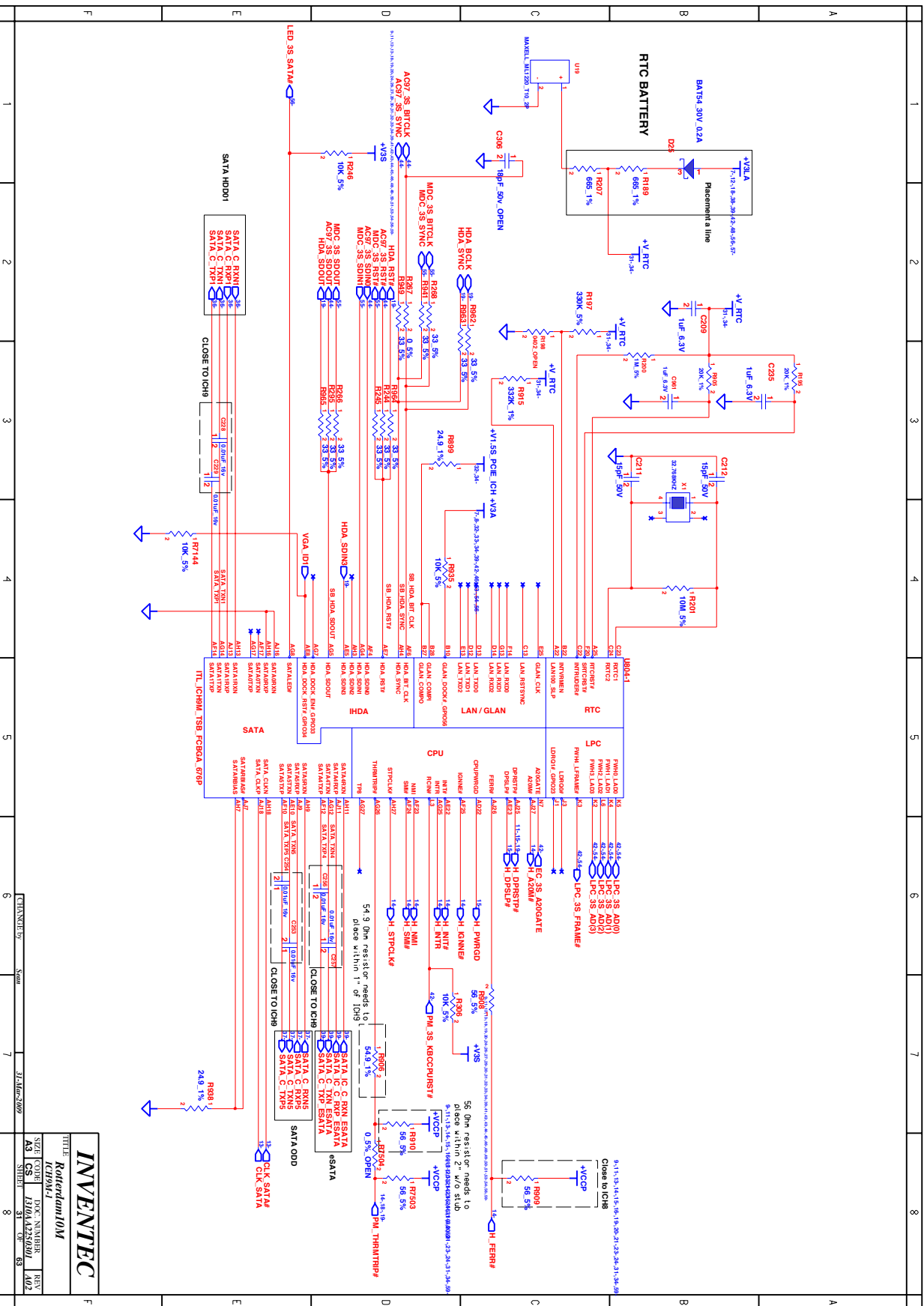












INVENTEC

Rotterdam 10M

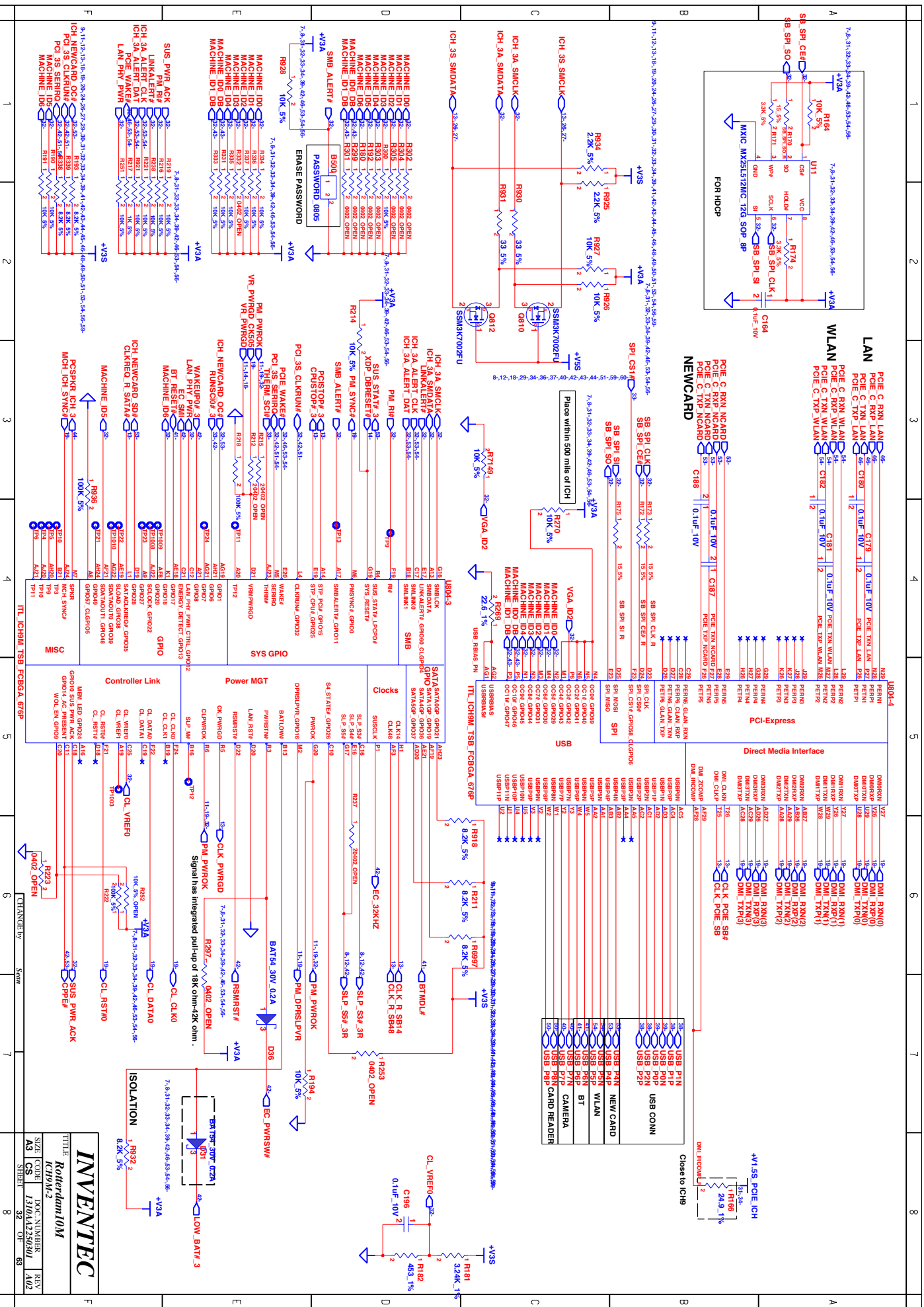
SIZE CODE  
A3 CS

DOC. NUMBER  
1310A.425000

REV  
1.002

SHEET  
31

OF  
63



INVENTEC

Rotterdam 10M

SIZE CODE DOC NUMBER REV

AS CS 1300A123500 402



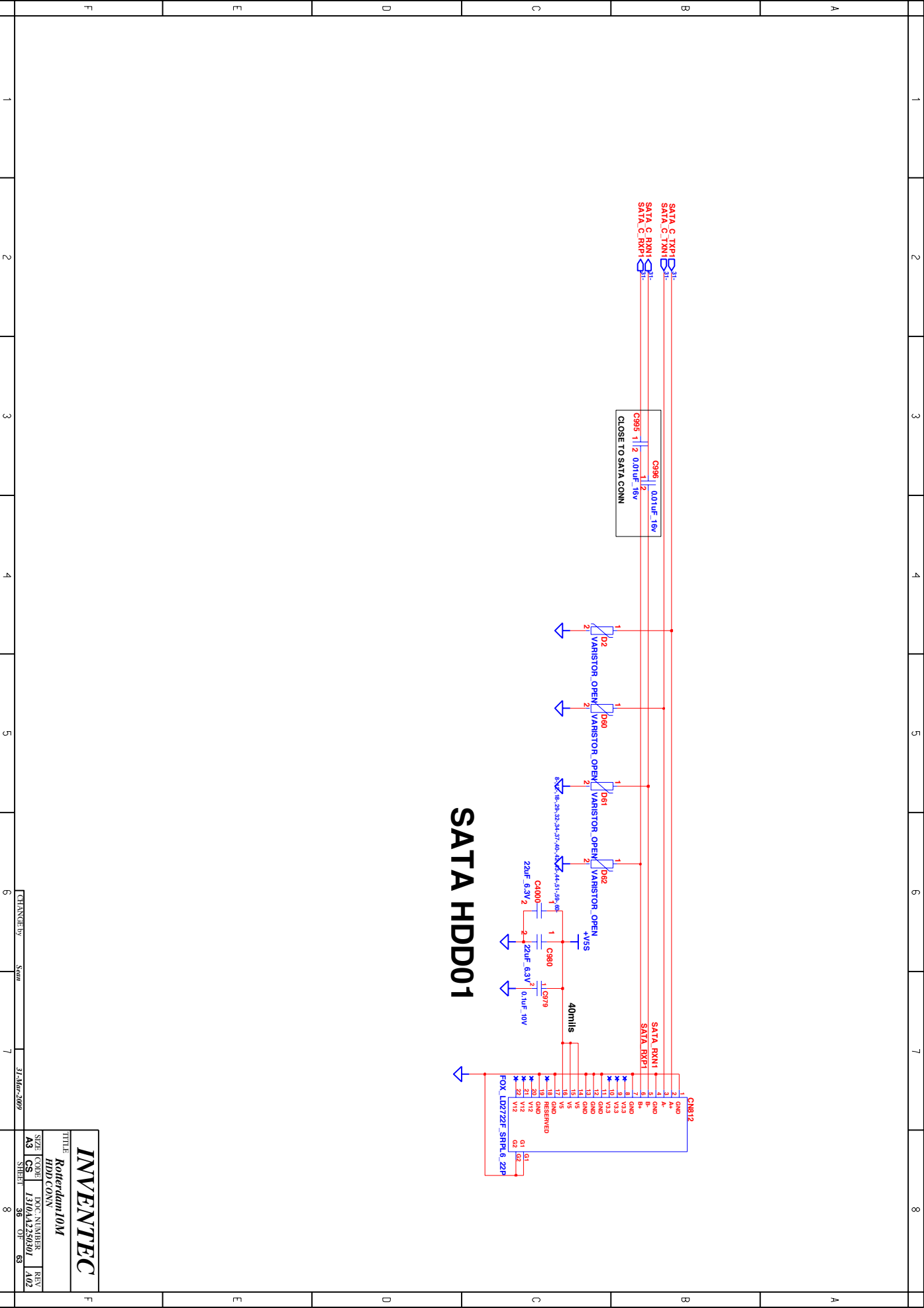




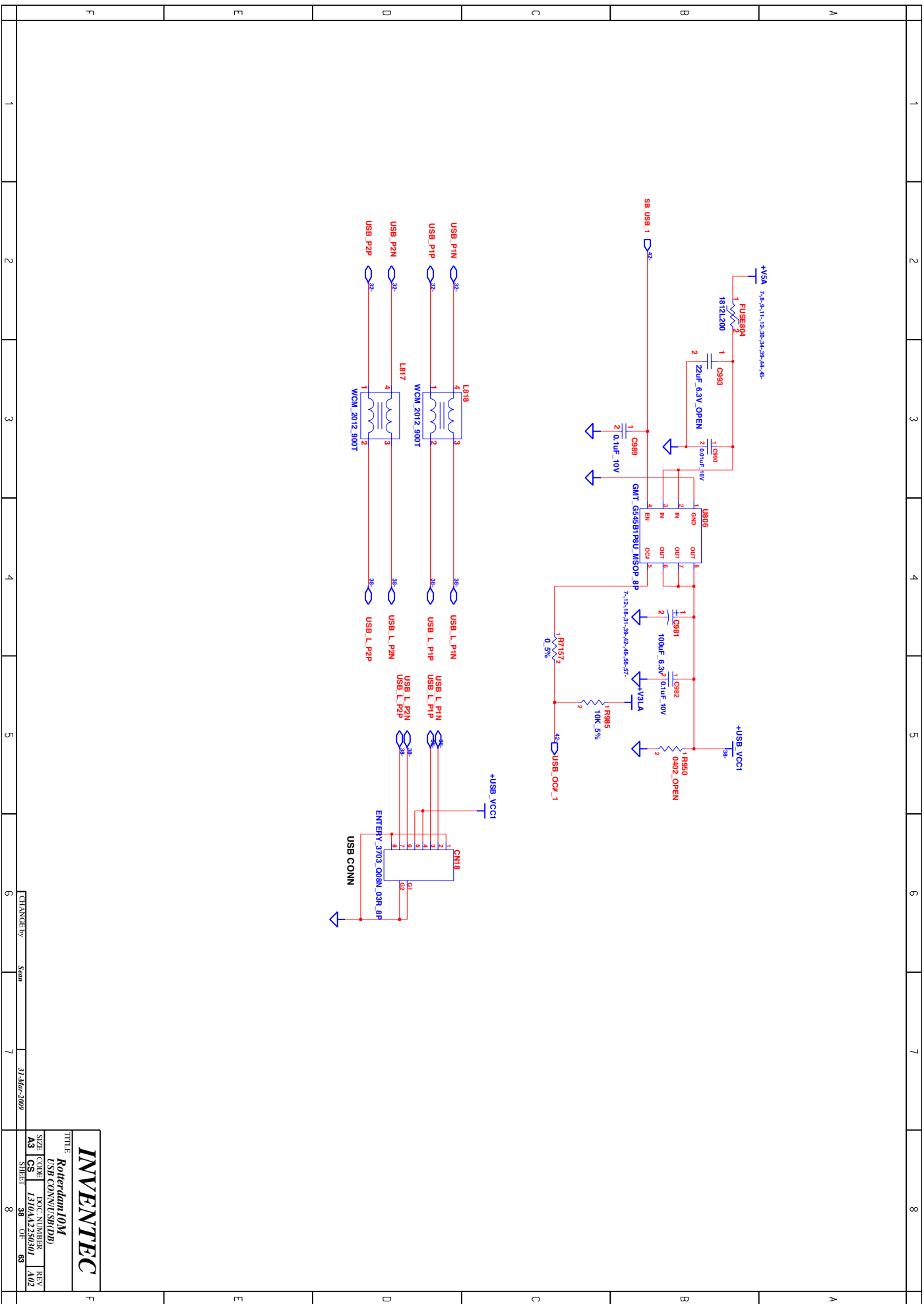
	1	2	3	4	5	6	7	8
A								
B								
C								
D								
E								
F								

TITLE	Rotterdam 10M		
SIZE CODE	DOC NUMBER	REV	
A3 CS	I310A4259301	A02	
SHEET	35 OF	63	

THICKNESS	Sum	31-Mar-2009
1		
2		
3		
4		
5		
6		
7		
8		







<b><i>INVENTEC</i></b>			
<b>TITLE</b>			
<b><i>Rotterdam 10M</i></b>			
<b><i>USB CONN/U/SK/DB</i></b>			
<b>SIZE</b>	<b>CODE</b>	<b>DOC. NUMBER</b>	<b>REV</b>
<b>A3</b>	<b>CS</b>	<b>1310A-250801</b>	<b>A02</b>
<b>SHEET</b>		<b>38</b>	<b>OF 63</b>
<b>8</b>			

	EN	D0	D1	FUNCTION
A	0	X	X	STANDBY
B	1	0	0	DEFAULT
C	1	1	0	CH0->5DB
D	1	0	1	CH1->5DB
E	1	1	1	CH0,1->5DB

The schematic diagram illustrates the power management section of the board. It features two main power rails: +VSA and +USB\_VCCO. The +VSA rail starts with a fuse FUSE03 and a capacitor C986, followed by a series of resistors and capacitors leading to the +VSA pin of the U985 chip. The +USB\_VCCO rail includes a capacitor C982 and a resistor R984, connected to the +USB\_OC#\_0 pin. Various other components like USB connectors, SATA ICs, and other chips are shown connected to these rails.

	EN	D0	D1	FUNCTION
A	0	X	X	STANDBY
B	1	0	0	DEFAULT
C	1	1	0	CH0->5DB
D	1	0	1	CH1->5DB
E	1	1	1	CH0,1->5DB

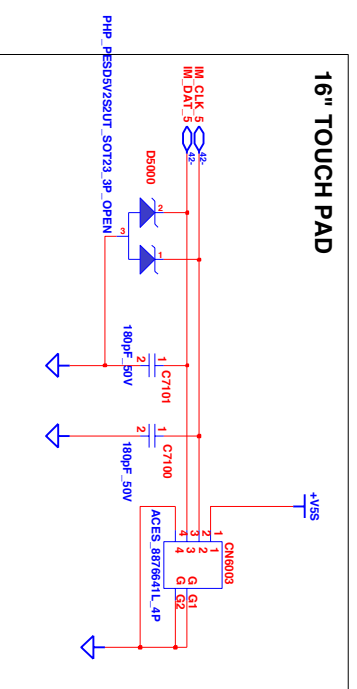
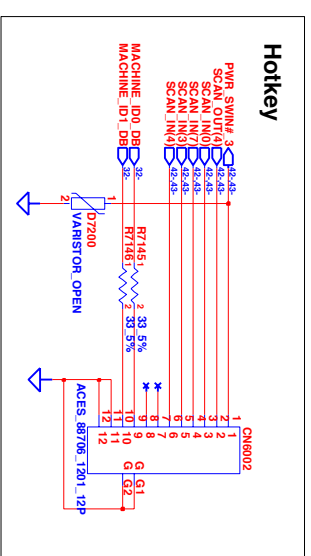
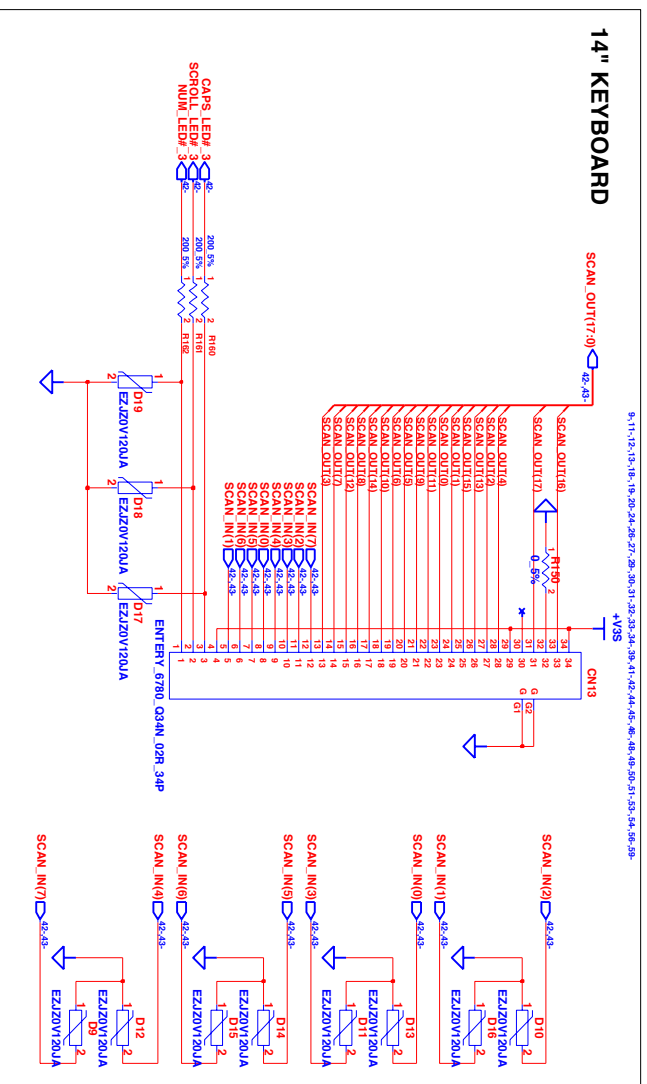
INVENTEC  
Rotterdam 10M  
SIZE CODE A3 CS I310A4250001 REV 1.02  
SYNTHESIS 89-07-85

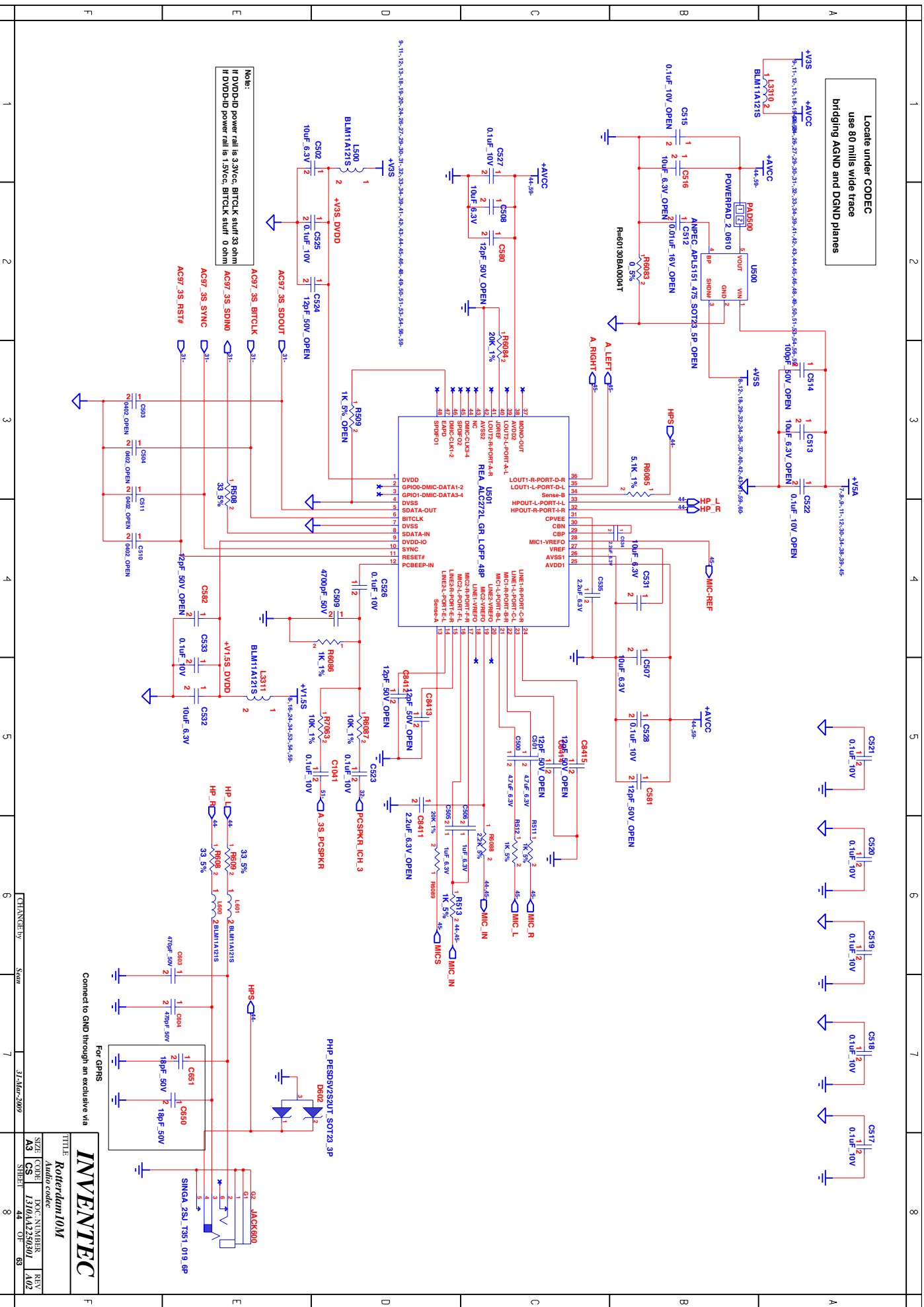








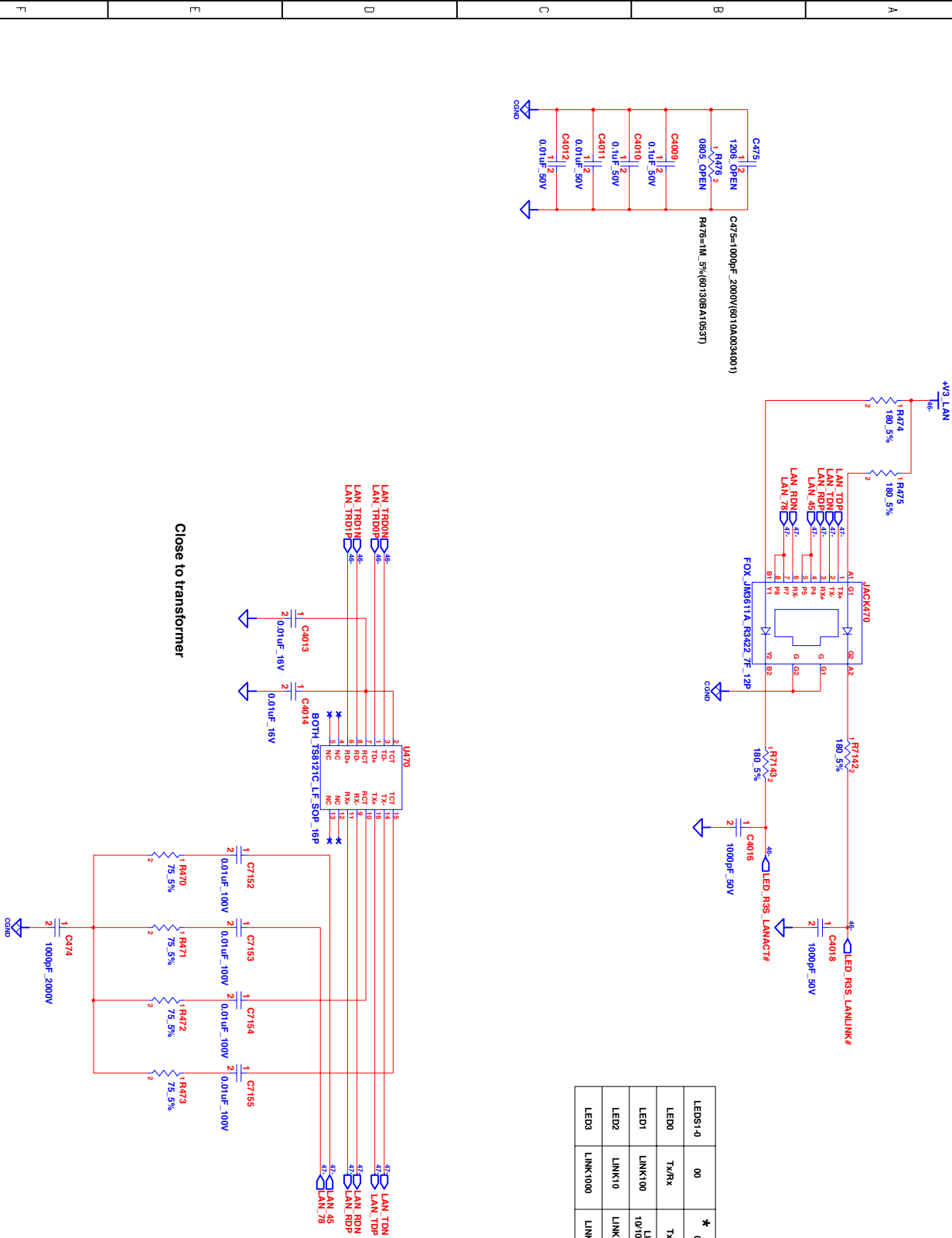








LED1-0	00	* 01	10	11
LED0	Tx/Rx	Tx/Rx	Tx	LNK10 ACT
LED1	LNK100	LNK100	LNK	LNK100 ACT
LED2	LNK10	LNK10/100	Rx	ULL
LED3	LNK1000	LNK1000	ULL	LNK1000 ACT

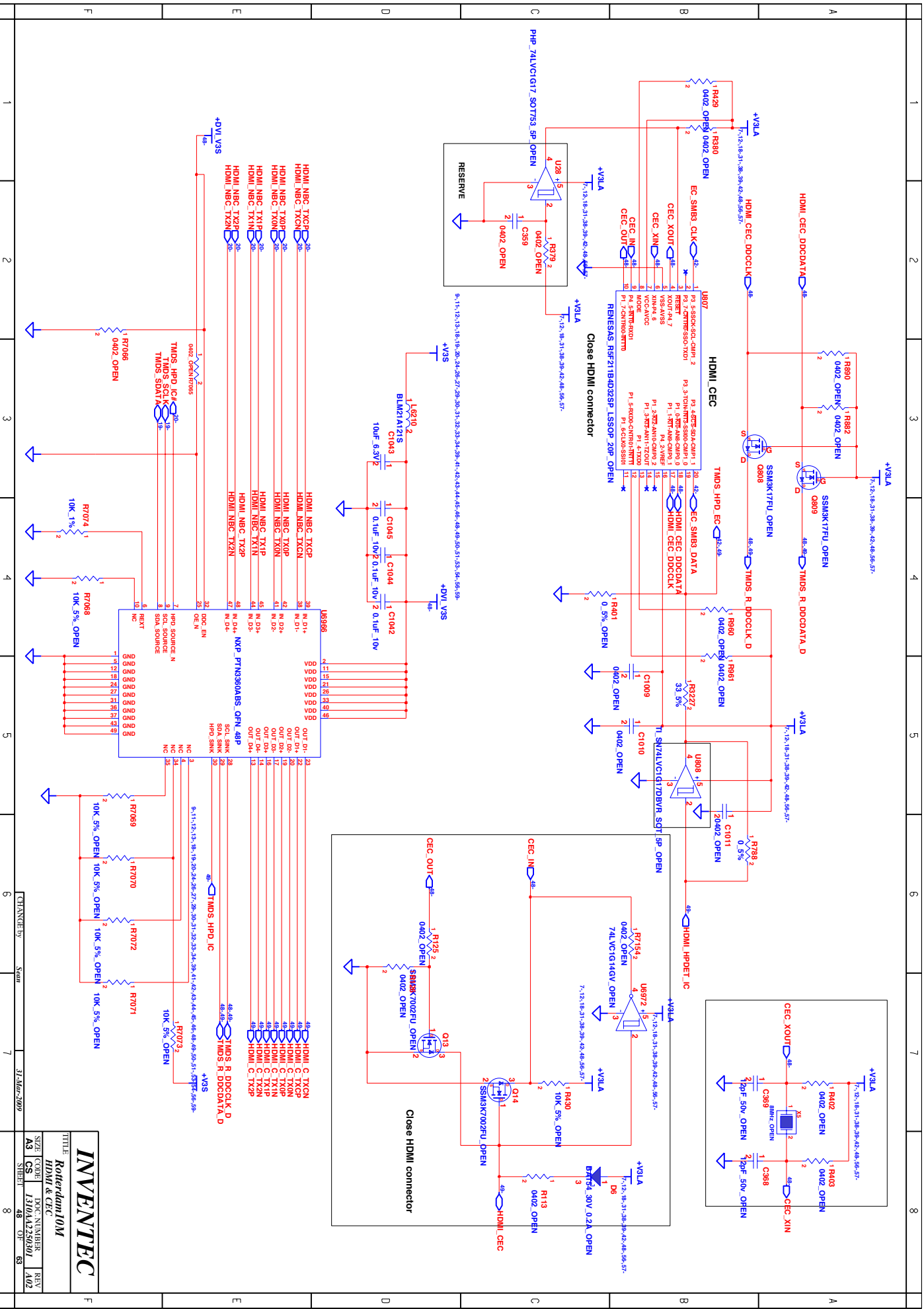


**INVENTEC**

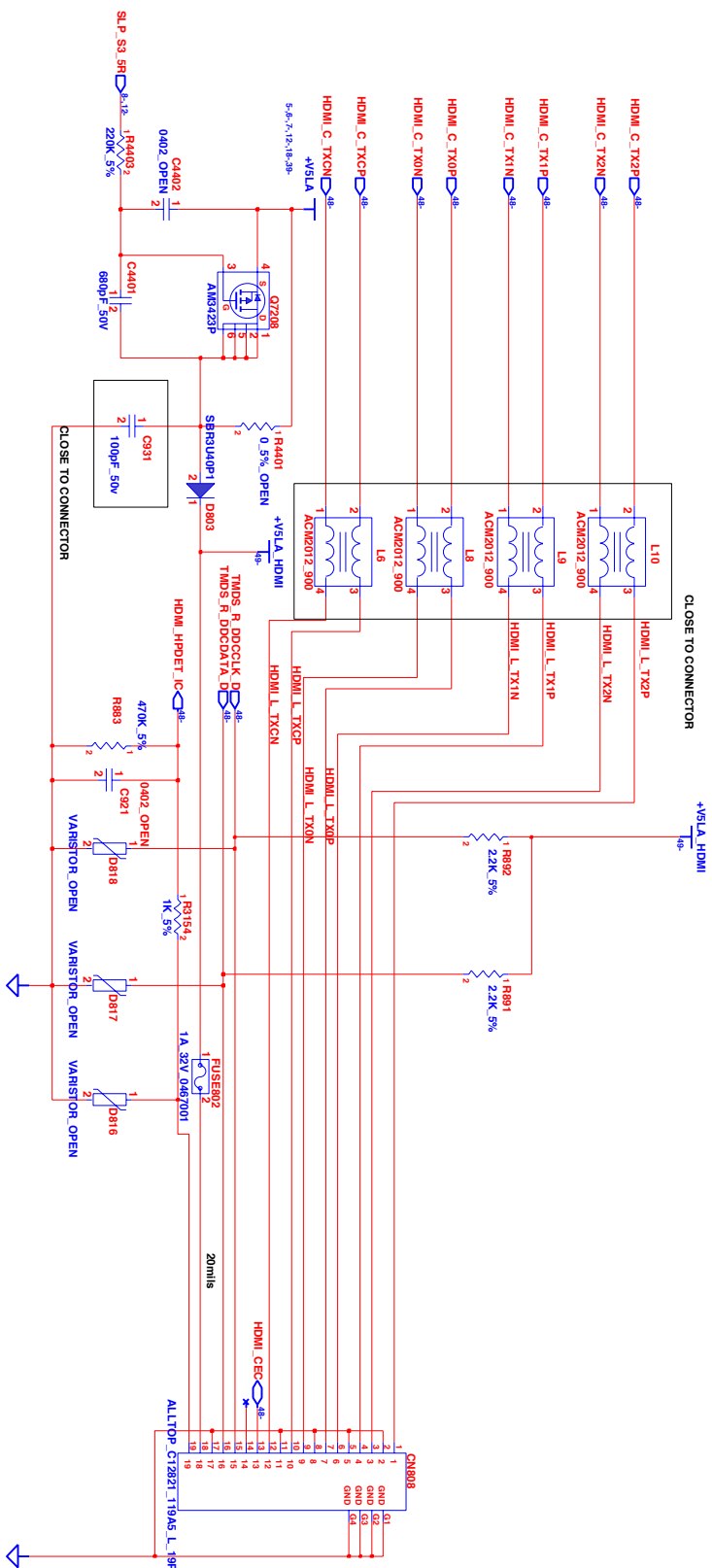
Rotterdam 10M

Transformer 8K145

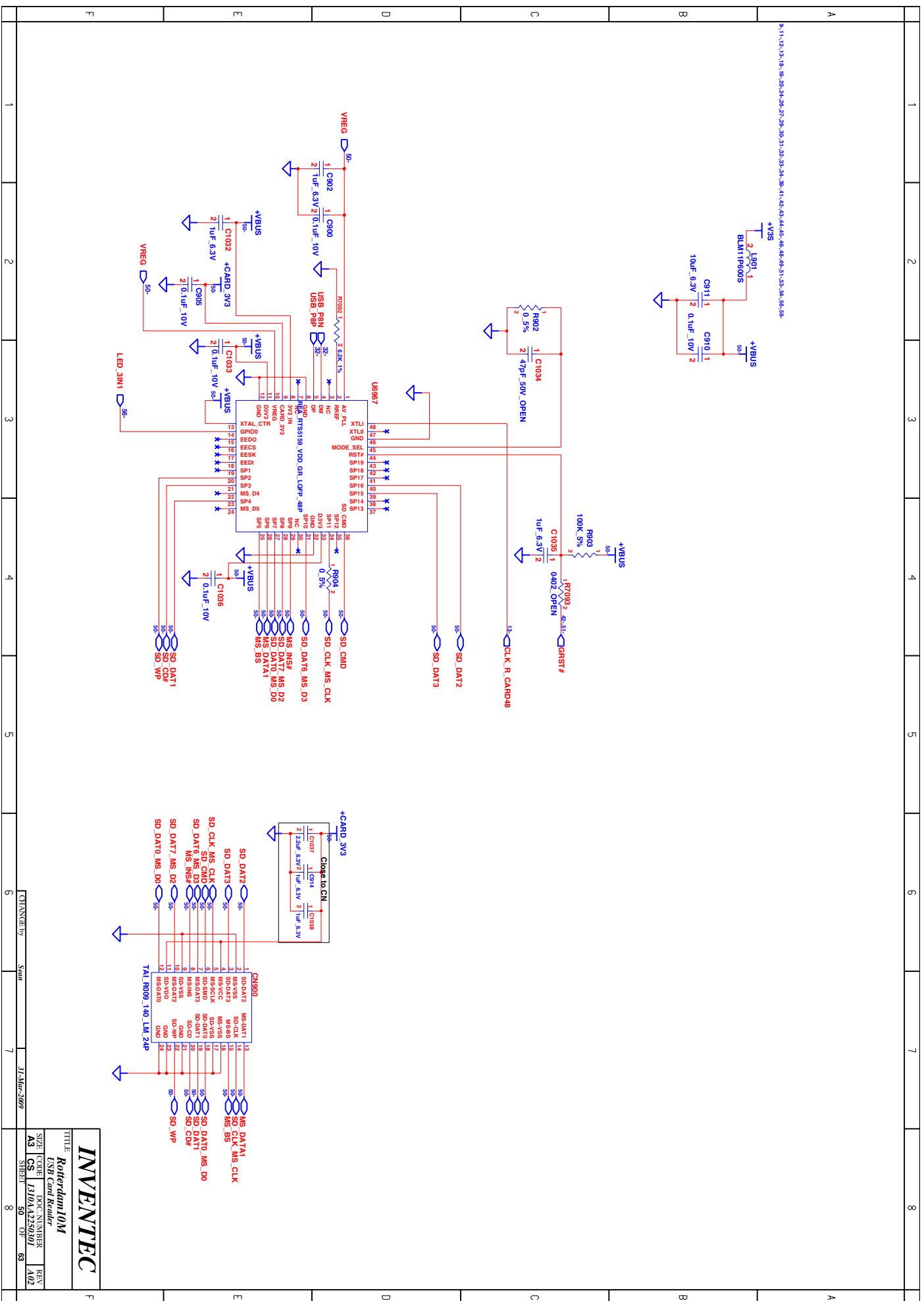
SIZE	CODE	DOC. NUMBER	REV
A3	CS	1310A425001	A02
SHEET	47	OF	63

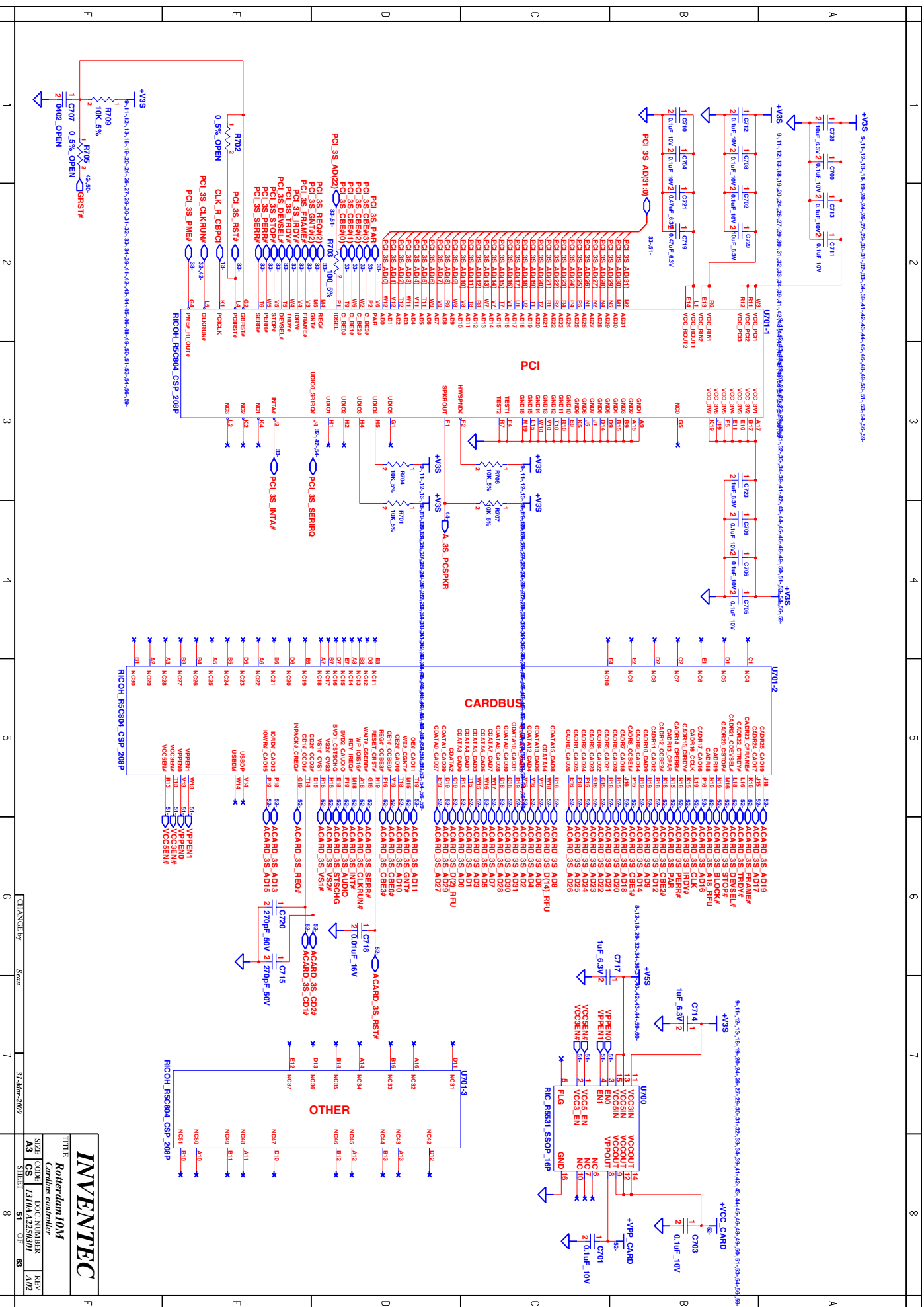




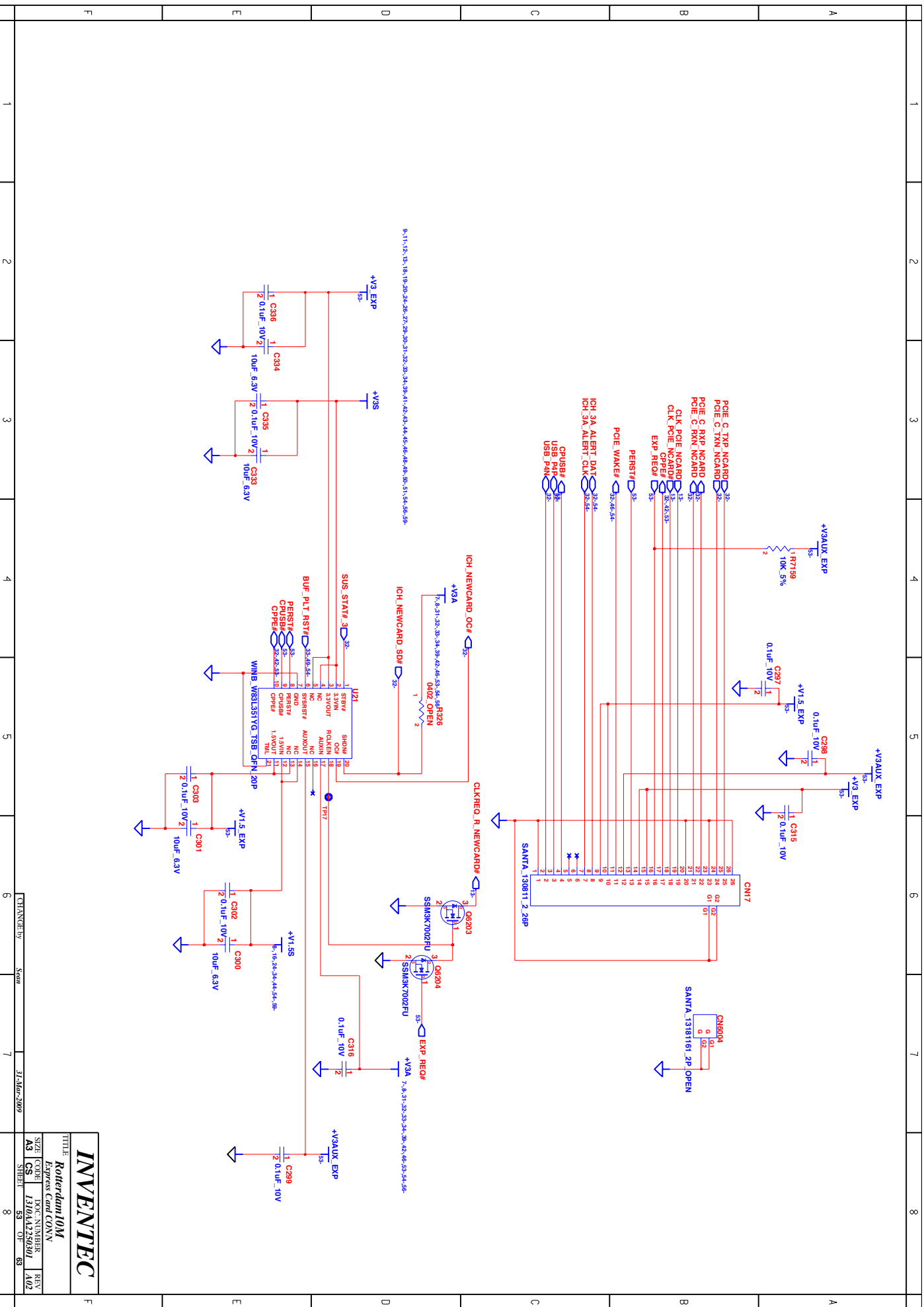


[www.vinafix.vn](http://www.vinafix.vn)









INVENTEC

Rotterdam 10M  
Express Card CONV

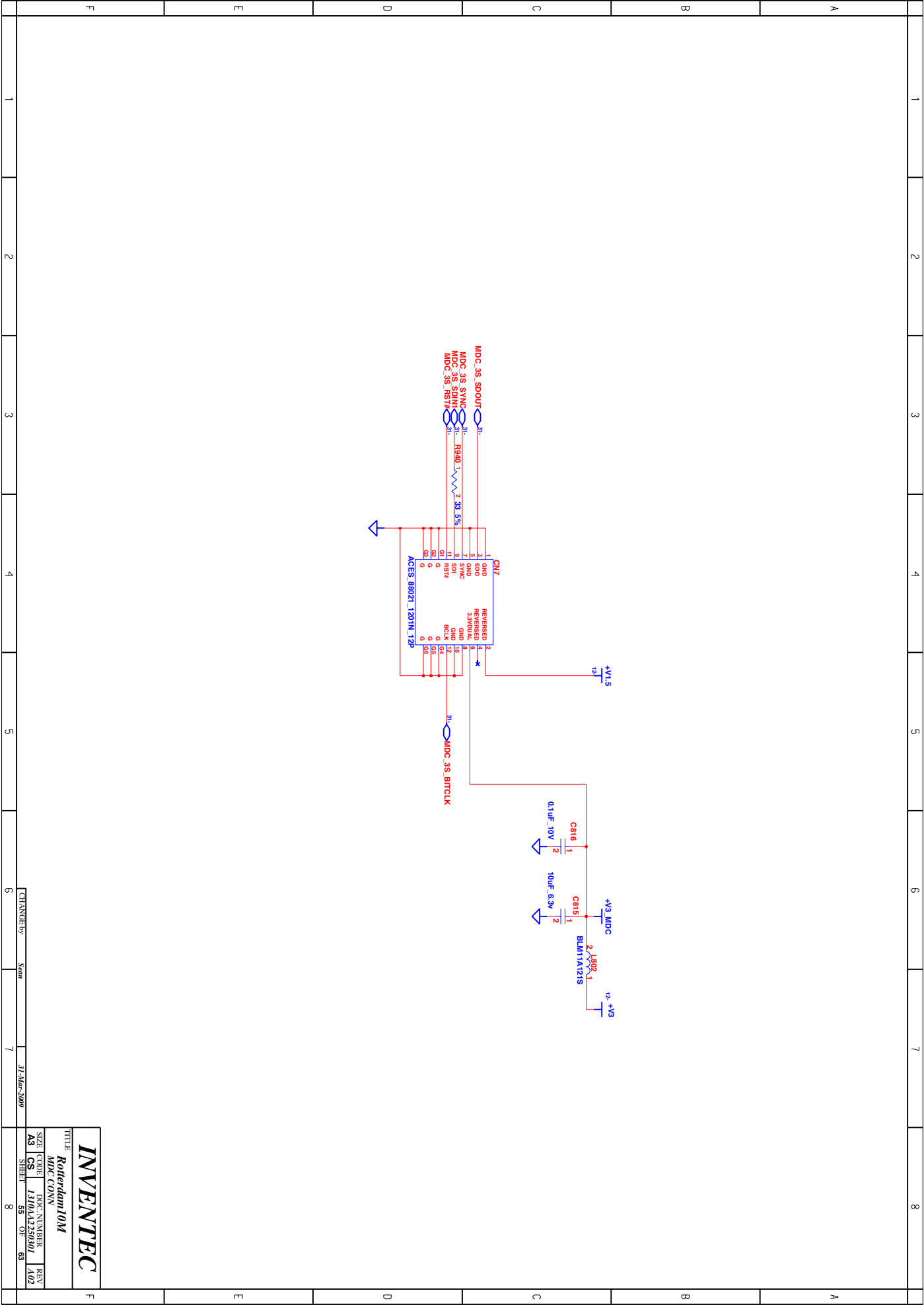
SIZE CODE DOC:NUMBER REV  
A3 CS 1310A425800 1 A02  
SHEET 83 OF 83

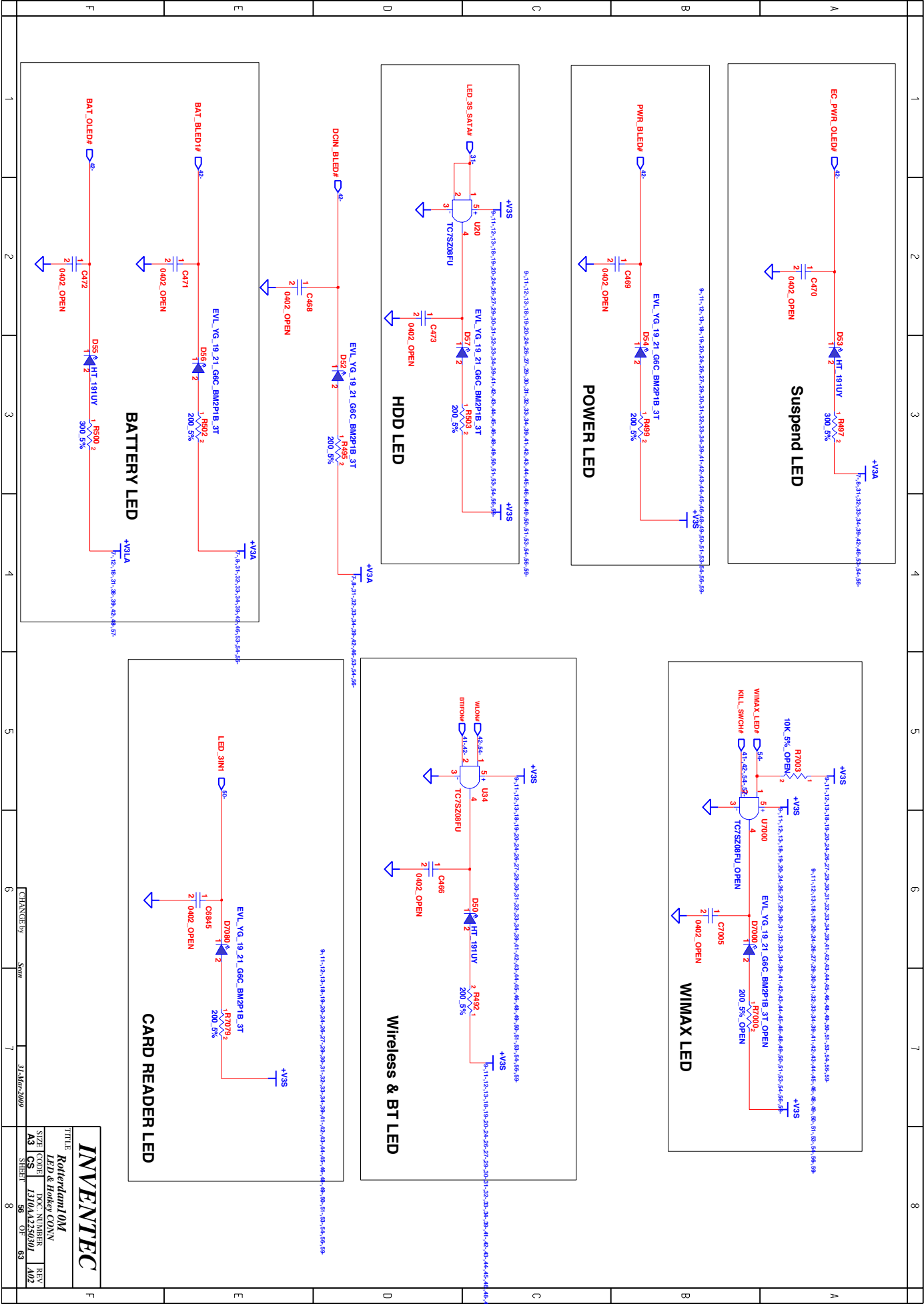
# Wireless & Debug card

The schematic diagram illustrates the internal circuitry of a Wireless & Debug card. It features a multi-stage power regulation system, starting with a +V1.5S input, followed by a +VLAN 3V regulator (C31) and a +VLAN 3V regulator (C31). The circuit includes several capacitors (C30, C842, C84, C843, C847, C27, C849, C31, C8408, C8409, C8403) and resistors (R894, R8942, R8943, R8944) for signal processing and control. The diagram also shows a detailed pinout for the ICs and a list of components at the bottom.

TITLE		Rotterdam10M	
SIZE		Wireless & debug card	
REV		A02	
CS		1310AA2250101	
SHEET		54 OF 63	

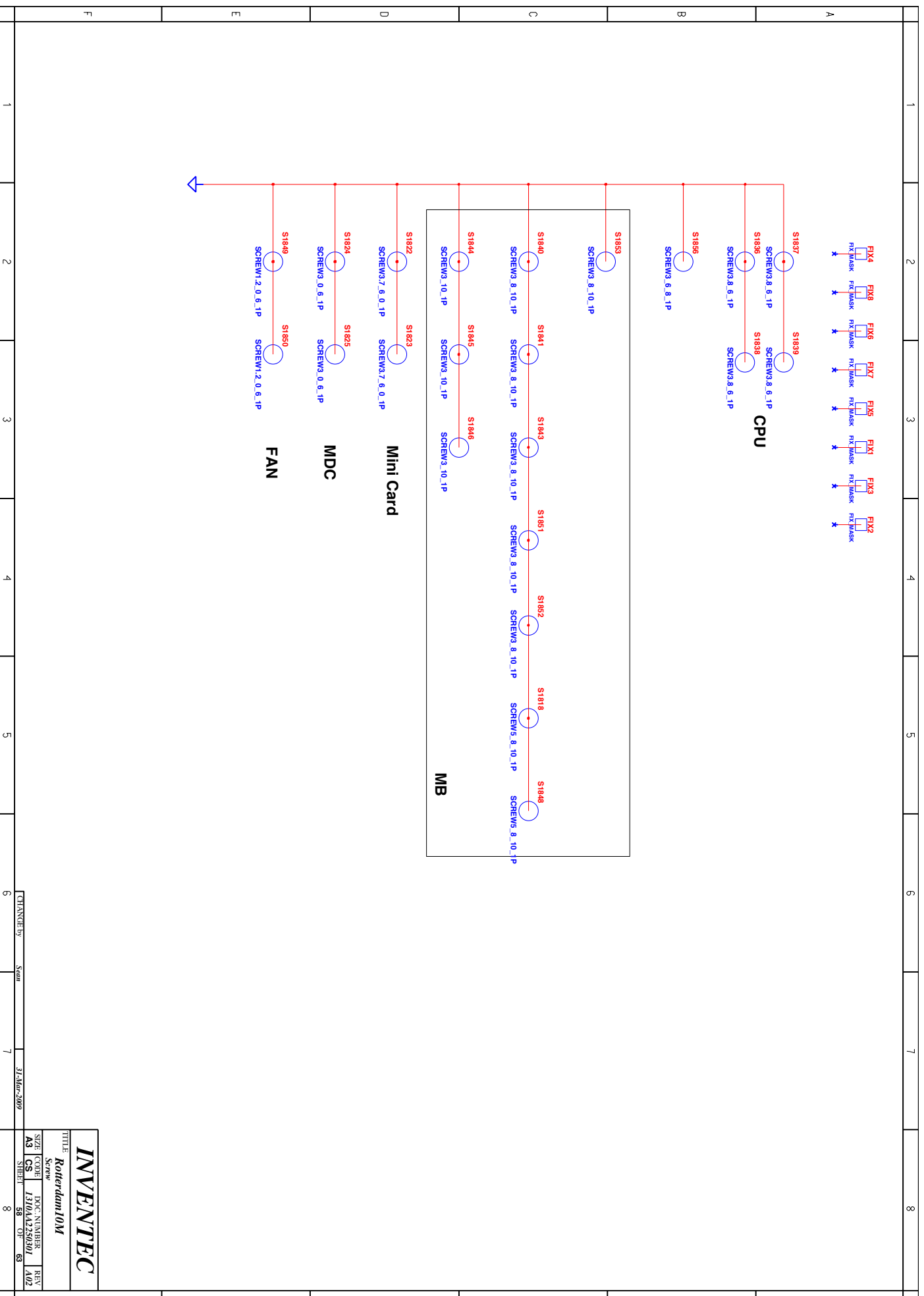
CHANGE BY: Scan 31-Mar-2009



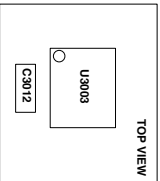
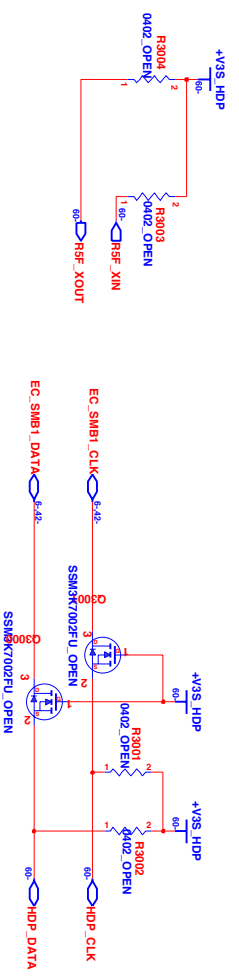
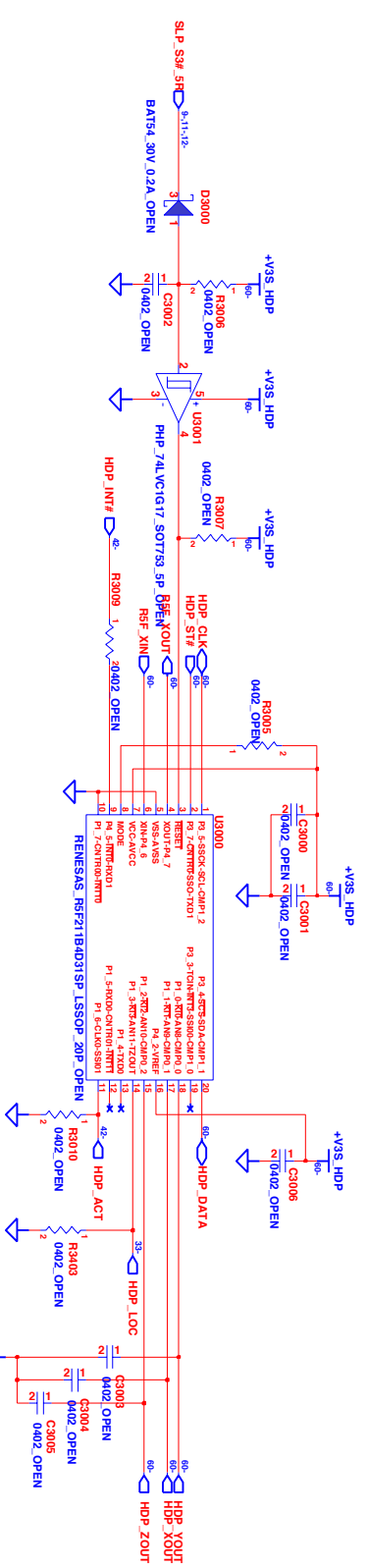
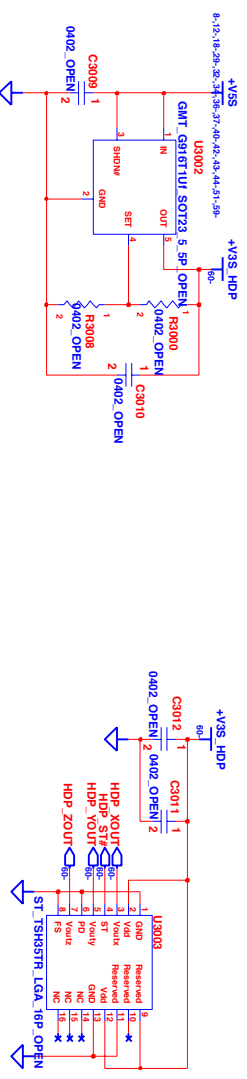








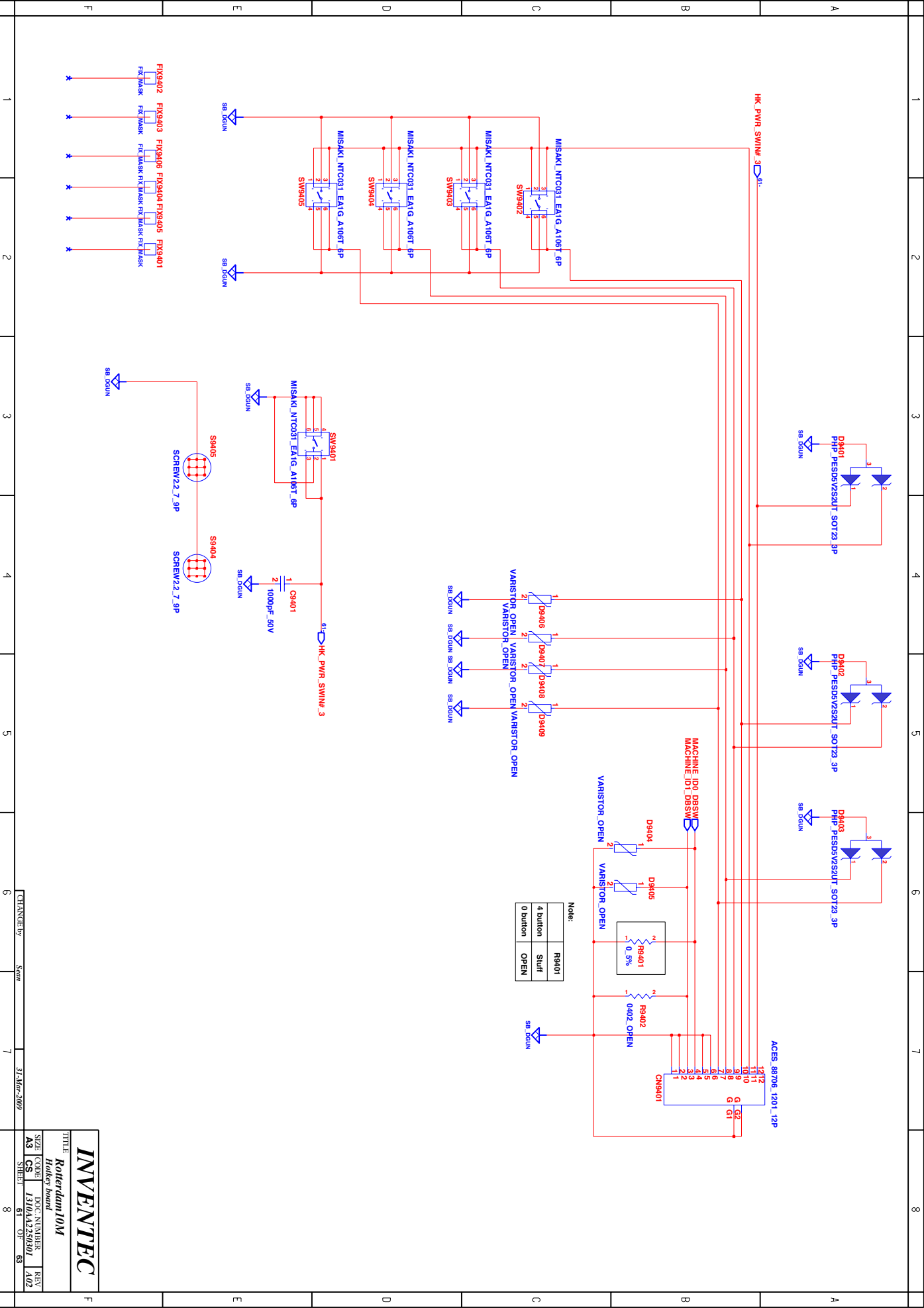


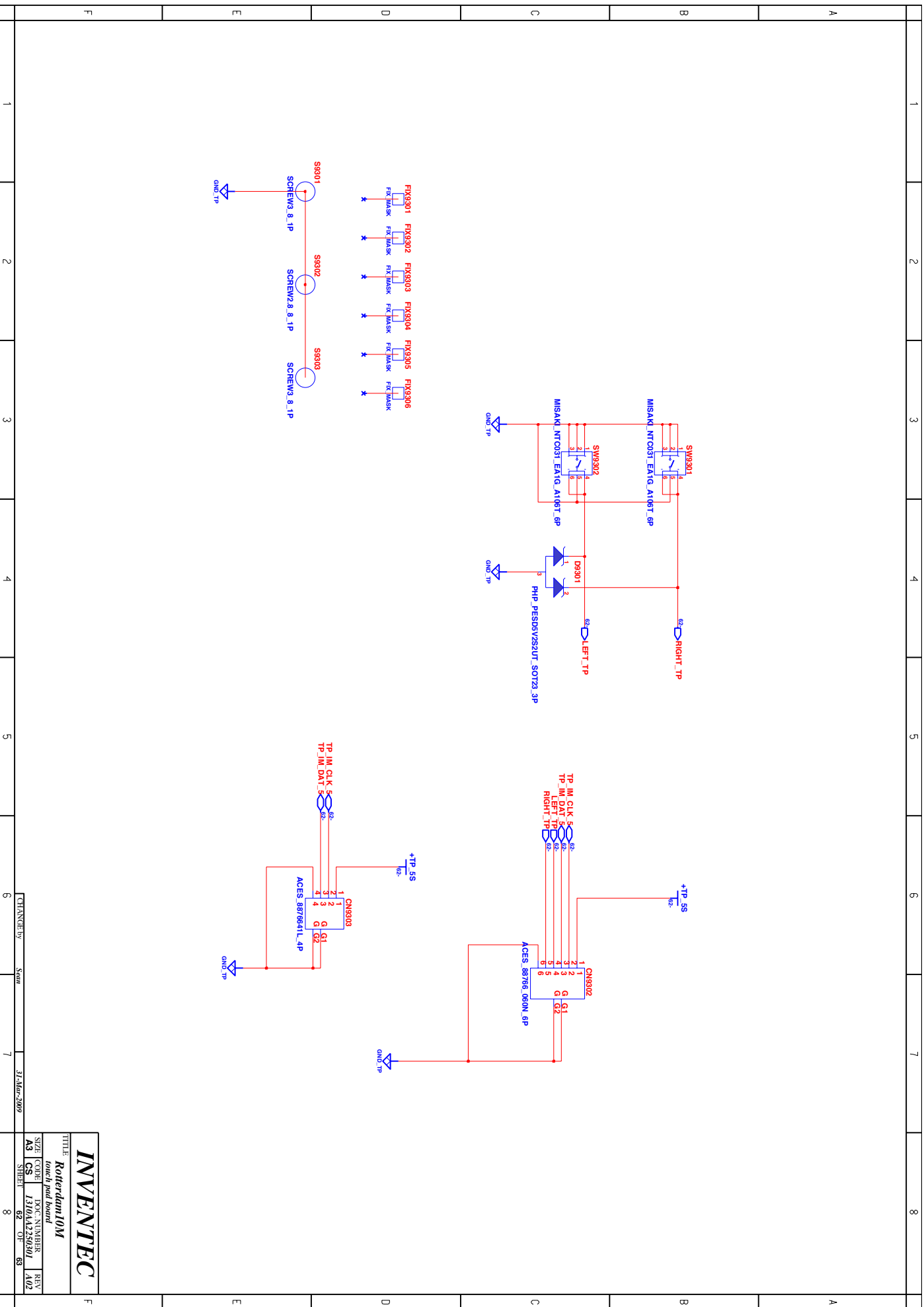


**INVENTEC**

Rotterdam 10M

SIZE CODE 3D sensor  
A3 CS 1310A1235001 REV 4.02  
SHEET 60 OF 63





**INVENTEC**

Rotterdam10M  
touch pad board

SIZE	CODE	DOC NUMBER	REV
A3	CS	1310A125000	A02
SHEET		62	OF 63

CHANGED by: Sean 31-Mar-2009

[illegible]